

BRANDON STARK

Specification File



ANCHOR HANDLING TUG (AHT)

BRANDON STARK is a state-of-the-art anchor handling tug that is utilized to support offshore activities.

- 20 Pax Accommodation
- 108 m² Deck Space
- 2.6T/m² Deck Strength
- 4500HP Anchor Handling Tugs
- 45T Bollard pull

CONTACT

E-mail address info@ejovigroup.com
bradonstark@ejovigroup.com

BRANDON STARK

VESSEL MAIN PARTICULARS

Vessel Name	BRANDON STARK
Manager	Ejovi Offshore Limited
Owner	Ejovi Offshore Limited
Vessel design	AHT
Type	AHT
Class definition	ABS+ A1 TOWING VESSEL, CIRCLE + AMS
Vessel built	2013
Port of Registry	Nigeria
Flag State	Nigeria
IMO Number	9694141
Call Sign	50BD2

PRINCIPAL DIMENSIONS

LOA	40M
Breadth Moulded	11.80m
Depth Moulded	4.55m
Maximum Draft	3.20m
LPP	38.00m2
Deck Cargo	166T
Deck Strength	2.6T/m2 uniform loading
Gross Tonnage	499T
Net Tonnage	349T

ACCOMMODATION

Total number of berth cabin	20
-----------------------------	----

THRUSTERS

Bow Thrusters	1XBrunvoll F1-37-LTC 1000 controllable pitch propeller thruster 3.2
---------------	---

PROPULSION

Main Engine	2XCATERPILLAR 3512C 2
Propeller	250BHP@ 1800RPM EACH
Drive type Shaft	Shaft Diesel
Fuel Type MGO/HFO	MGO

GENERATORS

Bow thrusters	21XBrunvoll F1-37-LTC 1000 controllable pitch propeller thruster 3.2
Aux generators make	Cummins
Aux Generator Capacity	350kw
EM generators Make	Cummins
EM generators capacity	350kw

BRANDON STARK

PRINCIPAL DIMENSION

Service Speed	7 Knots
Full Speed	11 knots
On DP (under average conditions)	4 knots
Electricity Supply	220v

CARGO DECK

Deck space	106m ²
Deck Cargo	166T
Deck Strength	2.6T/m ²
Deadweight	367T

CAPACITIES

Fuel Oil	270m ³
Fresh Water	90m ³
Number of freshwater tanks	5
Freshwater pump capacity	50m ³ /Hr
Number of pumps	1
Pump type screw/centrifugal	Centrifugal

NAVIGATION EQUIPMENT

X-band Rader	1 X MU-190
S band Rader	1 X MU-190
Autopilot	1 X NAUTOPILOT NP60
GPS	1 X DS-80
Echo sounder	1 X FE-700
GMDSS Radios	FURUNO FS-2570
Gyro Compass	1 X STD22
AIS	1 X Furuno FA-150

COMMUNICATION EQUIPMENT

MF/HF DSC	3 X FM-8900S
Navtex	1 X NX-700
EPIRB	TRON/60S/60GPS
SART	2 X SART IC-6913A
Inmarsat C	FELCOM 18
Portable VHF	2 X IC-M93D
Portable UHF	2 X HNN9010A
Weather fax	1 X FuFAX-408

DECK STRENGTH

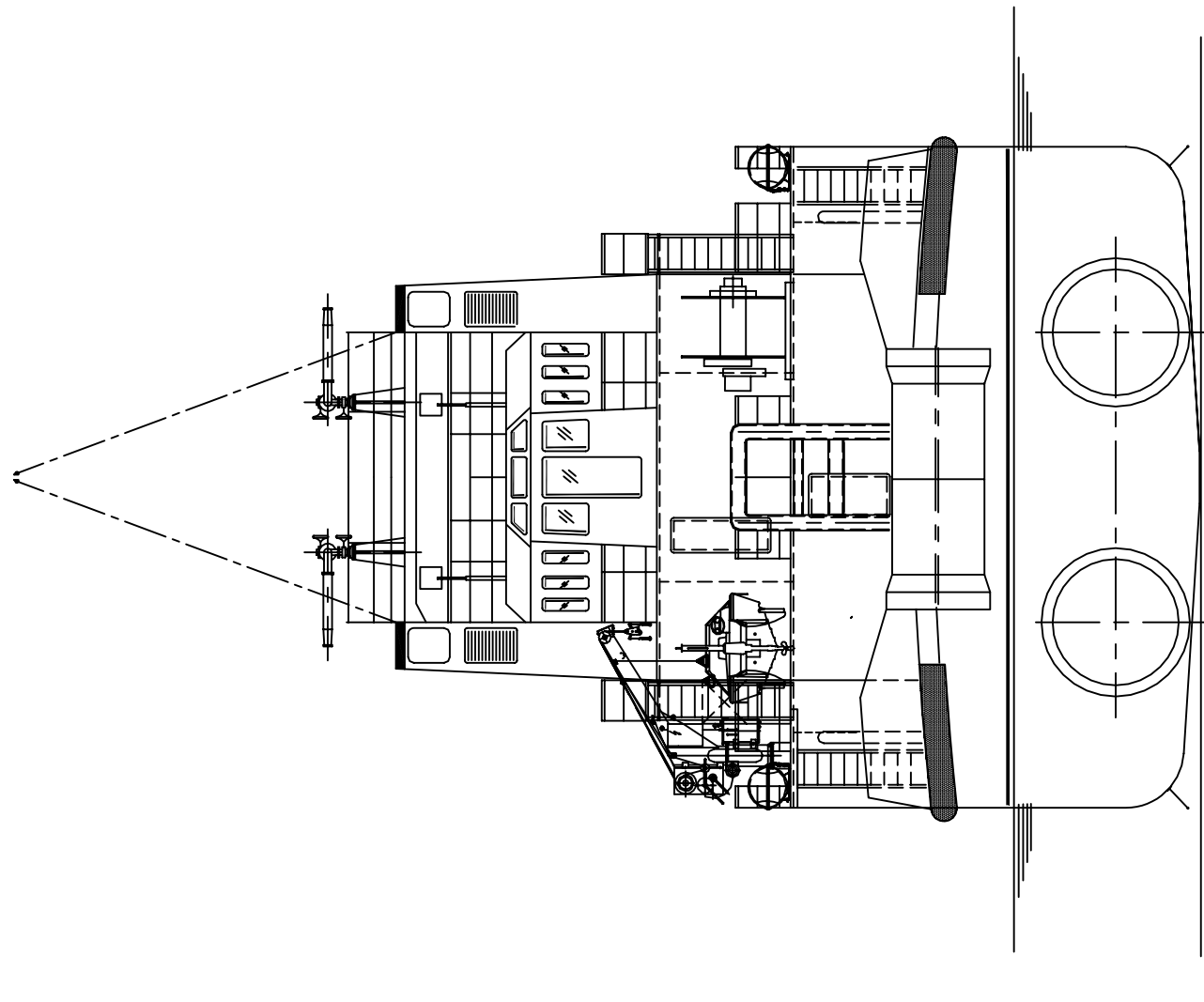
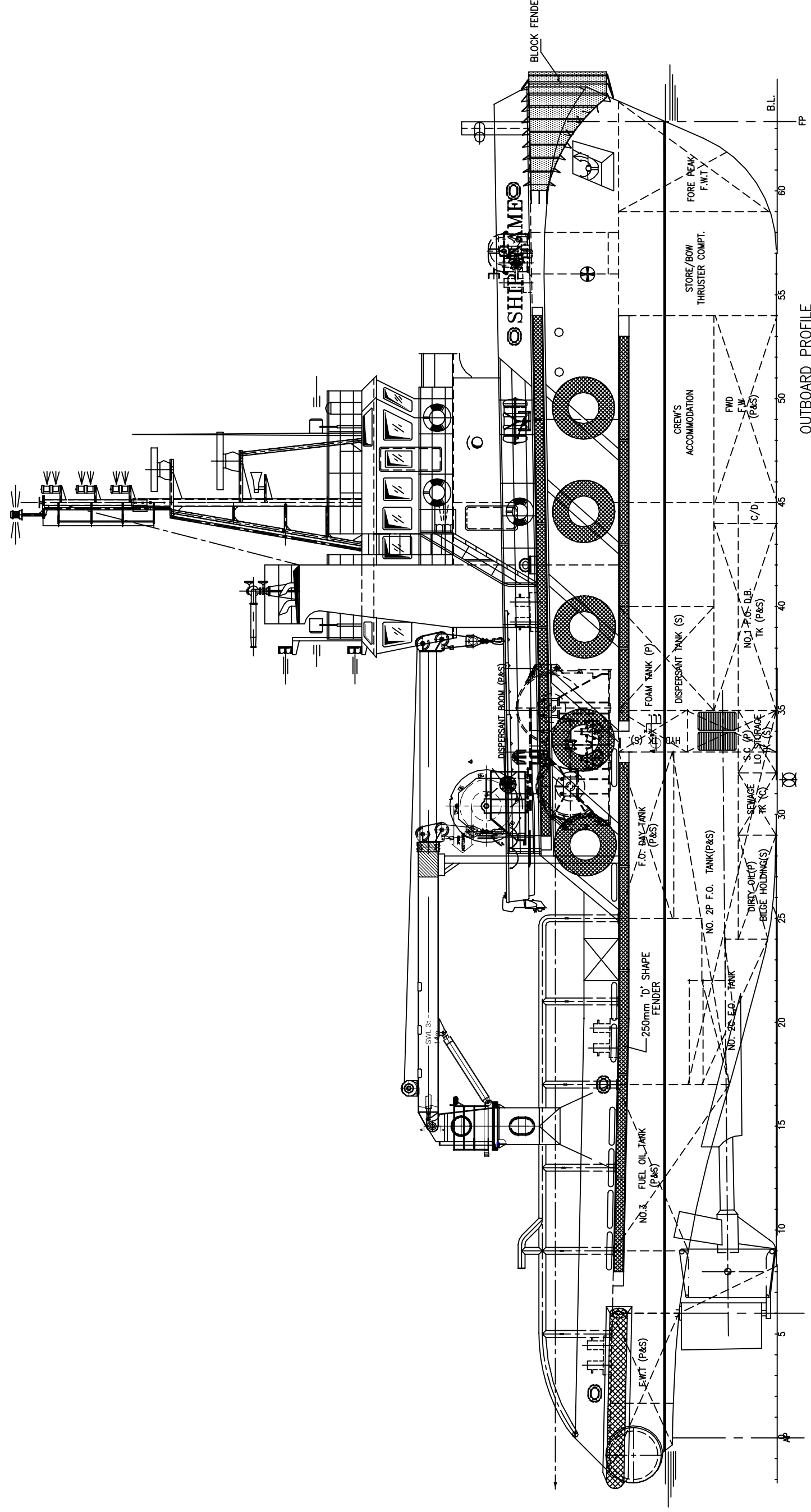
Anchor windlass cum bow	1 x 4t/10m/min, c/w double warping drum for mooring
Towing/Anchor Handling winch	1 X Marine Equipment Singapore, hydraulic type, drum pull 75T 1st layer, brake holding 150T
Tugger winch	2 X Marine Equipment Singapore, hydraulic type Rated pull 10T X 15m/min
Towing pins/shark jaw	1 combined set hydraulic type Max. tensioning force: 200T Supplied by Marine Equipment, Singapore
External fire-firefighting pump	1 X electrical Fi-Fi pump 470m ³ /hr @100m head c/w 2 fire monitors, each 230m ³ /hr @60m head. Supplied by DI America

MISCELLANEOUS

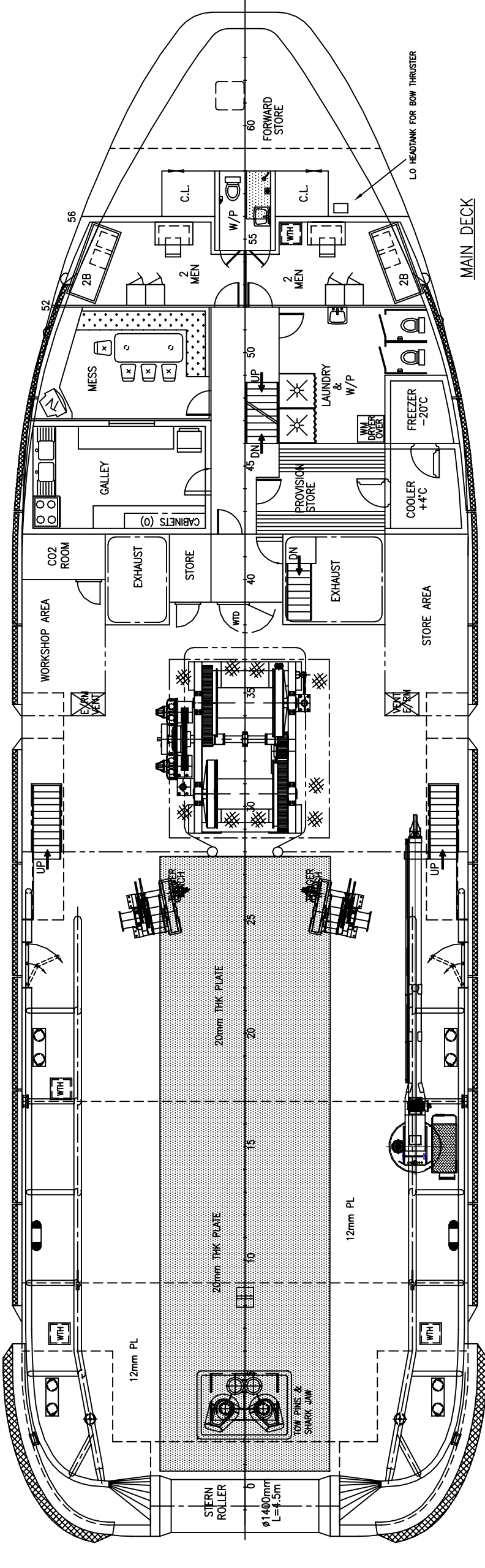
Life Rafts	2X20 persons
Rescue Boat	Narwal Sv400
Provision Crane	1 X ELECTRIC HYDRAULIC TELESCOPIC
Number of Lifejackets	24
Number of Survival suits	24

STANDBY/RESCUE

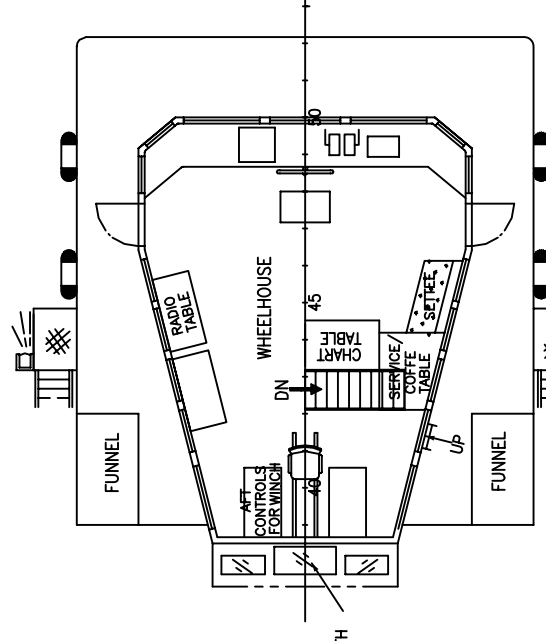
Searchlights	3
Line throwing device	2



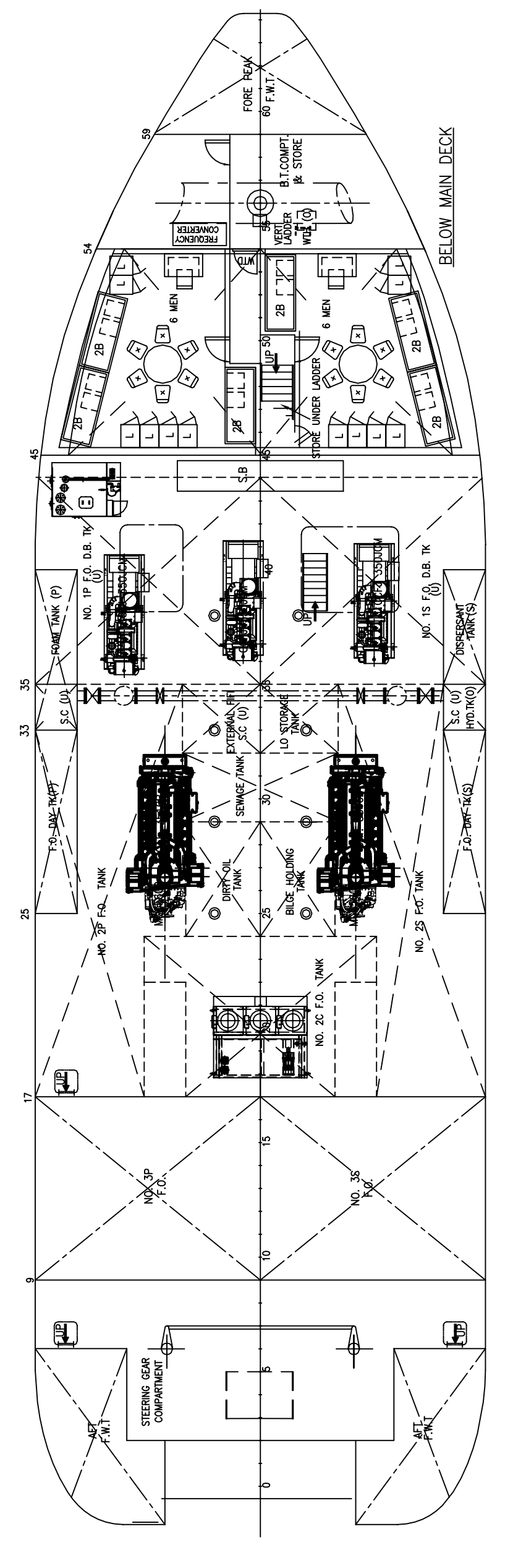
STERN VIEW



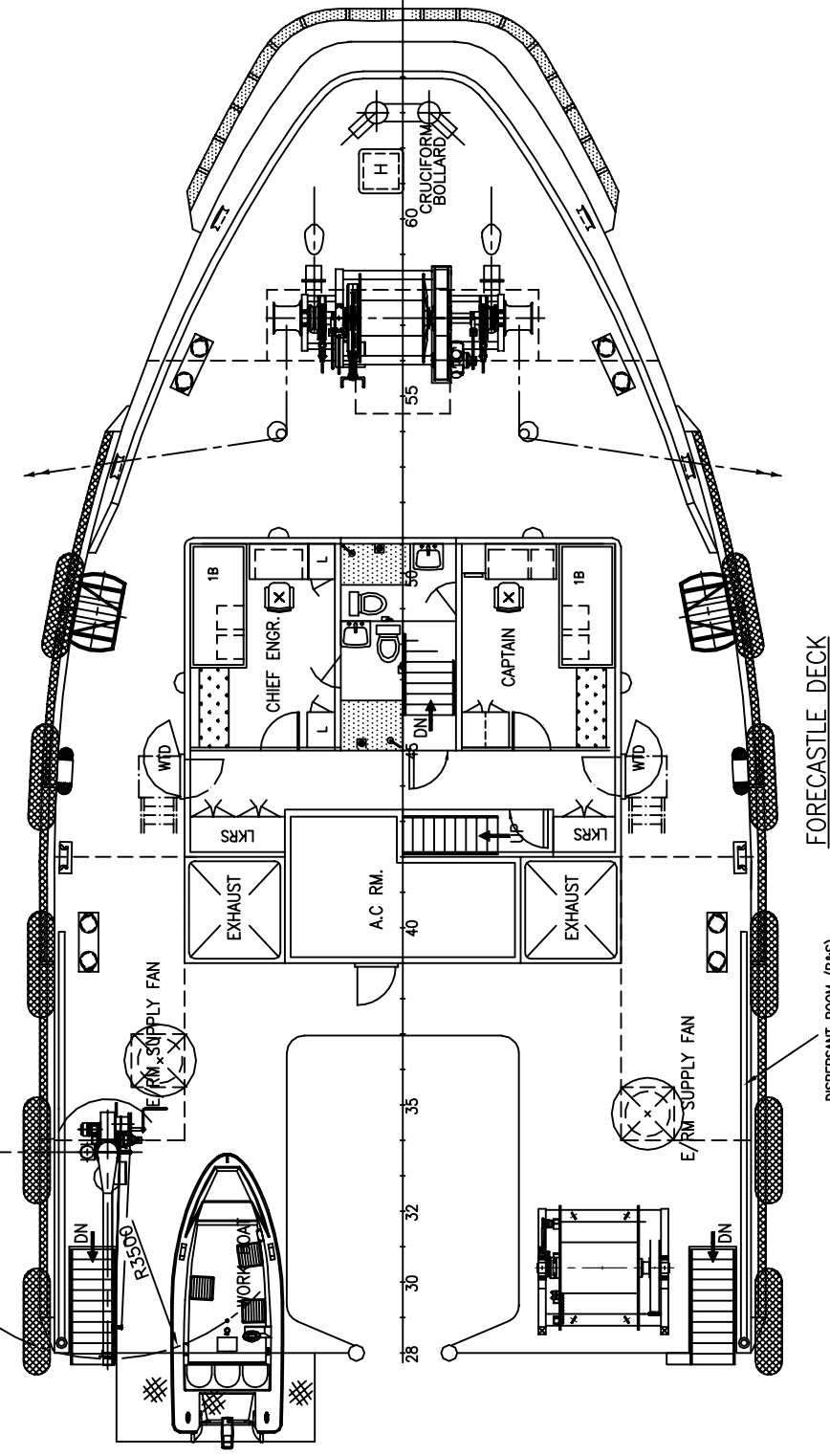
MAIN DECK



WHEELHOUSE DECK



BELOW MAIN DECK



FORECASTLE DECK

PRINCIPAL PARTICULARS

LENGTH O.A.	40.00 m
LENGTH W.L.	38.35 m
LENGTH B.P.	38.00 m
BEAM MLD.	11.80 m
DEPTH MLD.	4.55 m
DRAFT DESIGNED	3.20 m
DRAFT MAX.	3.85 m
FRESH WATER	112.0 m ³ APPROX
FUEL OIL	270.0 m ³ APPROX
COMPLEMENT	18 MEN
SPEED	12.5 Kn APPROX
BOLLARD PULL	48 T APPROX

REVIEWED
Details of this review
are as indicated in the
ABS Letter



AS AMENDED
on pages: _____

DATE	20/08/11	REV. No.	0	W.Z.M W.L.G	XUE
DESCRIPTION	SUBMITTED TO OWNER AND CLASS FOR APPROVAL				
DWN.	CHKD.,APPD.				
HULL NO.	VI-101				
BUILDER	Yangzhou Downshin Shipyard				
CLASS	ABS+A1E+AMS UNRESTRICTED TOWING VESSEL				
NAME	40M AH TUG				
GENERAL ARRANGEMENT	ML0095/G-1				
DATE	20-08-2011				
SHEET	1/1				
SCALE	1:100				
SPL. No.					
DWG. No.					

SHANGHAI ML MARINE DESIGN CO., LTD
Room 1407, NO.1139-6 Pudong Avenue, Pudong New District, Shanghai, CHINA P.C.200135
Tel: 86-21-5093-5693 Fax: 86-21-5192-0596 E-mail: mlmarinedesign@163.com