

MV DAENERYS TARGARYEN

Specification File



PLATFORM SUPPLY VESSEL (PSV)

MV DAENERYS TARGARYEN is a state-of-the-art platform supply vessel that utilized for supporting offshore activities.

- 50 Pax Accommodation
- 643 m³ Deck Space
- 5.5T/m² Deck Strength
- DP2 Platform Supply Vessel (75m)

CONTACT

E-mail address

info@ejovigroup.com

mvdaenerystargaryen@ejovigroup.com

MV DAENERYS TARGARYEN

VESSEL MAIN PARTICULARS

Vessel Name	MV DAENERYS TARGARYEN
Manager	Ejovi Dredging And Marine Services Limited
Owner	Ejovi Dredging And Marine Services Limited
Vessel design	Fujian South East Shipyard, China
Type	Platform Supply Vessel (PSV)
Class definition	ABS+ A1(E) Offshore Support Vessel, Fire fighting Class 1, +AMS, DPS-2
Vessel built	2013
Port of Registry	Nigeria
Flag State	Nigeria
IMO Number	9664249
Call Sign	5NX12

ACCOMMODATION

Total number of berth cabin	50
1 man cabins	14 Berth Cabins
2 man cabins	18 Berth Cabins
Hospital	1 Berth cabin

GENERATORS

Bow thrusters	2x10 Tons Thruster, approx. 600Kw, CPP
Shaft generators make	Leroy Somer LSAM 50.2VL10
Shaft Generator Capacity	7X1000kw
EM generators Make	CATC4.4
EM generators capacity	1X80kW

PRINCIPAL DIMENSIONS

LOA	75M
Breadth Moulded	17.25m
Depth Moulded	8.00m
Maximum Draft	6.50m
Clear Deck Area	643m ²
Deck Cargo	1200T
Deck Strength	5.5T/m ² uniform loading
Gross Tonnage	2899T
Net Tonnage	869T

PROPULSION

Main Engine	Niigata Marine 8L28H
Propeller	2X300HP @ 750RPM
Drive type Shaft	Shaft Diesel
Fuel Type MGO/HFO	MGO

THRUSTERS

Bow Thrusters	2x10 Tons Thruster, approx. 600Kw, CPP
---------------	--

MV DAENERYS TARGARYEN

PRINCIPAL DIMENSION

Service Speed	10 Knots
Full Speed	13 knots
On DP (under average conditions)	
Electricity Supply	220v

CARGO DECK

Deck space	643m ³
Deck Cargo	1200T
Deck Strength	5.5 T/m ²

CAPACITIES

Fuel Oil	1000m ³
Fresh Water	500m ³
Ballast/Drill Water	1500m ³
Liquid Mud	600m ³
Cement Tank	226m ³
Freezer/Chiller	10m ³ /10m ³
Foam/Detergent	14m ³ /14m ³

NAVIGATION AND COMMUNICATION EQUIPMENT

Inmarsat - C	1 X Furuno Felcom -15
VHF Radio	2 X Furuno FM-8800S
NAVTEX Rec	McMurdo, NAV-700B
SART	2 X McMurdo S4
EPIRB	1 X McMurdo E5
Portable VHF Radio	3 X McMurdo R2
Radar	2XFuruno FAR2117 & FAR2137
Echo Sounder	1XFuruno FE-700
DGPS	2XFurunoGP-150
Gyrocompass	2XAns chutz 22GG/GGM
Auto pilot	1 X Ans chutz PilotStar D
VSAT	1
Magnetic Compass	1 X Lilley - Gillie Mk2000
Weather Fax	1 X Furuno FAX - 408
Speed Log	1 X Furuno DS-80
Wind Indicator	1 X Gill Ultrasonic
AIS	1 X Furuno FA-150
DP/Joystick	DP 2 System Kongberg/1 X Kongsberg
PA Talkback System & Self Powered Tel	

FIRE FIGHTING & ANTI-POLLUTION EQUIPMENT

External:

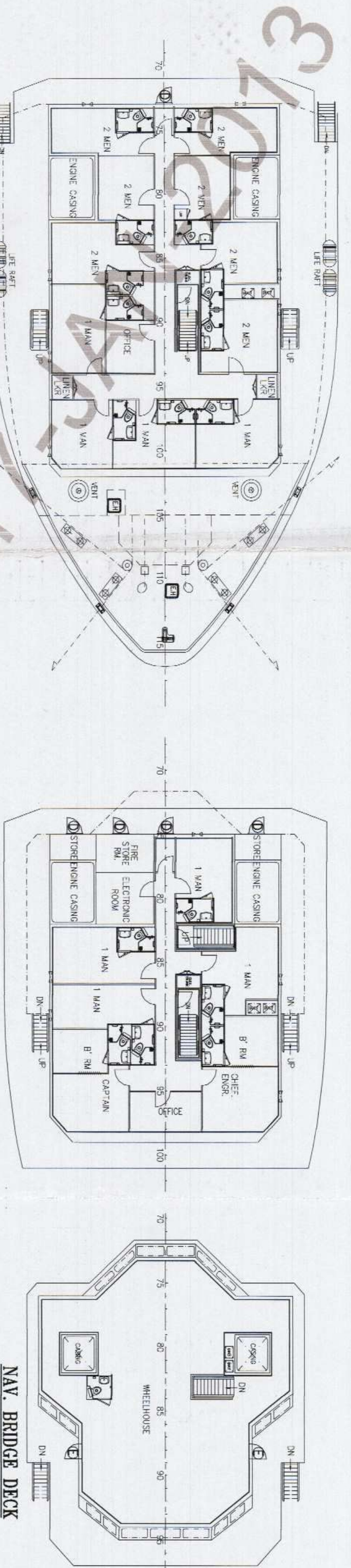
FIFI System	Class 1 with water curtain all round
Fire pump	2X1500m ³ /hr @12 Bar
Monitors	Water/Foam 2 X fire monitors
Oil Dispersant System	2X Cluster nozzles or overhang boom

Internal:

Emergency Fire Pump	1X35m ³ /hr @65 head
BA Recharging Comp	1x75 ltrs/min @ 200 Bar
- Co2 System in the Engine Room / Fire Detection & Alarm in Living Spaces And Engine Room	
- Fire Detection & Alarm in Living Spaces and Engine Room	

MISCELLANEOUS

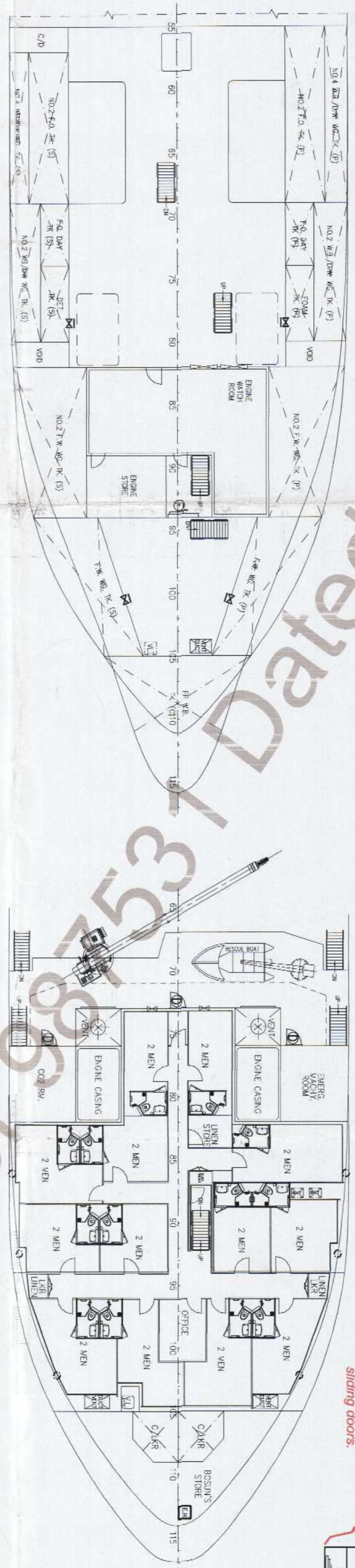
Life Rafts	6X25 persons
Rescue Boat	1X6c/w Outboard Engine
Crane	1 X 3T @10m
Oily Water Separator	1X1.00m ³ /hr, Ocean Clean Water
Water Maker	2X10T/day, Sea Recovery Corporation
Sewage Treatment Plant	1X50 men/day



UPPER FORECASTLE DECK PLAN

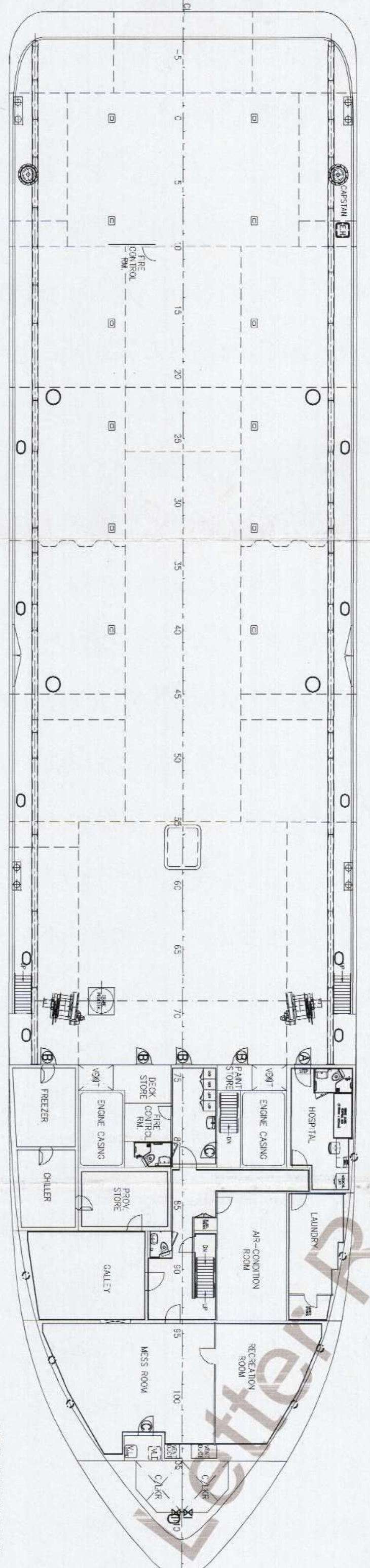
OFFICER DECK

NAV. BRIDGE DECK

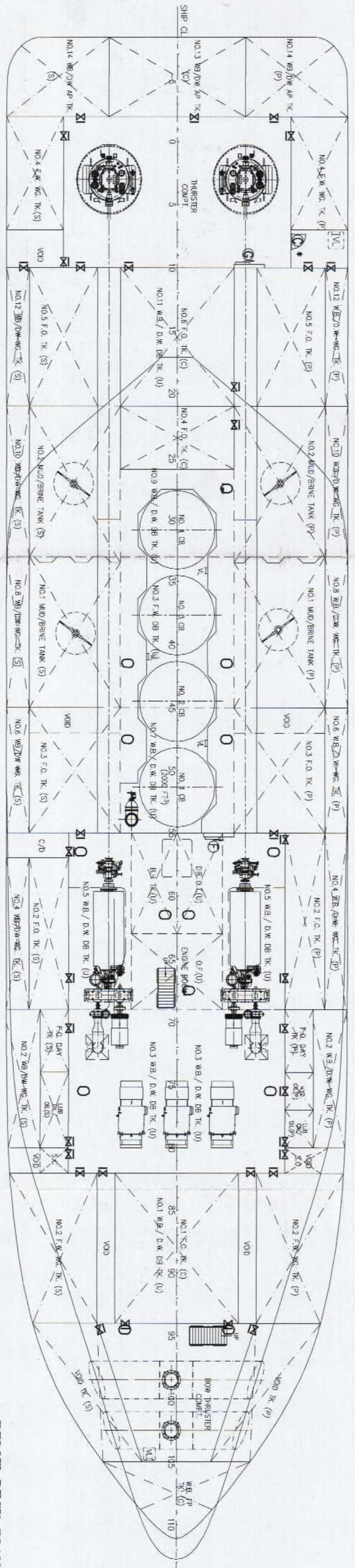


TWEEN DECK PLAN

FORECASTLE DECK PLAN



MAIN DECK PLAN



BELOW DECK PLAN

SYMBOL	WALL CUT SIZE	DOOR QTY.	LOCATION
(A)	1000 x 1400	1	MAIN DECK - HOSPITAL
(B)	900 x 1400	1	MAIN DECK - PASSAGEWAY
(C)	900 x 1400	1	MAIN DECK - DECK STORE
(D)	900 x 1400	1	MAIN DECK - PAINT STORE
(E)	900 x 1850	1	MAIN DECK - FREEZER
(F)	900 x 1850	1	MAIN DECK - ENGINE RM PASSAGEWAY
(G)	900 x 1700	1	MAIN DECK - V.L. TRUNK
(H)	900 x 1675	1	BELOW DECK - FIRE CONTROL PLAN
(I)	900 x 1580	1	BELOW DECK - CO2 ROOM
(J)	900 x 1580	1	BELOW DECK - EMERGENCY MACHINERY ROOM
(K)	900 x 1580	1	BELOW DECK - PASSAGEWAY
(L)	900 x 1580	1	BELOW DECK - ENGINE ROOM
(M)	900 x 1580	1	BELOW DECK - HULLER COMP.

* TREATED AS NON-WATERTIGHT IN DAMAGE STABILITY CALCULATION.

Power operated watertight sliding doors.

POSITIONS	DECK CUT SIZE	QTY.
NON-FLUSH MANHOLE		
N010 DW/MB TK (FR.25+400, PAS)	400 x 600	2
N02 DW/MB TK (FR.38+200, PAS)	400 x 600	2
N03 DW/MB TK (FR.53+200, PAS)	400 x 600	2
N04 DW/MB TK (FR.65+400, PAS)	400 x 600	2
N05 DW/MB TK (FR.71+400, PAS)	400 x 600	2
N06 DW/MB TK (FR.84+150, PAS)	400 x 600	2
N07 DW/MB TK (FR.109+300, S)	400 x 600	2
N08 DW/MB TK (FR.134, PAS)	400 x 600	2
N09 DW/MB TK (FR.154, PAS)	400 x 600	2
N10 DW/MB TK (FR.174, PAS)	400 x 600	2
N11 DW/MB TK (FR.194, PAS)	400 x 600	2
N12 DW/MB TK (FR.214, PAS)	400 x 600	2
N13 DW/MB TK (FR.234, PAS)	400 x 600	2
N14 DW/MB TK (FR.254, PAS)	400 x 600	2
N15 DW/MB TK (FR.274, PAS)	400 x 600	2
N16 DW/MB TK (FR.294, PAS)	400 x 600	2
N17 DW/MB TK (FR.314, PAS)	400 x 600	2
N18 DW/MB TK (FR.334, PAS)	400 x 600	2
N19 DW/MB TK (FR.354, PAS)	400 x 600	2
N20 DW/MB TK (FR.374, PAS)	400 x 600	2
N21 DW/MB TK (FR.394, PAS)	400 x 600	2
N22 DW/MB TK (FR.414, PAS)	400 x 600	2
N23 DW/MB TK (FR.434, PAS)	400 x 600	2
N24 DW/MB TK (FR.454, PAS)	400 x 600	2
N25 DW/MB TK (FR.474, PAS)	400 x 600	2
N26 DW/MB TK (FR.494, PAS)	400 x 600	2
N27 DW/MB TK (FR.514, PAS)	400 x 600	2
N28 DW/MB TK (FR.534, PAS)	400 x 600	2
N29 DW/MB TK (FR.554, PAS)	400 x 600	2
N30 DW/MB TK (FR.574, PAS)	400 x 600	2
N31 DW/MB TK (FR.594, PAS)	400 x 600	2
N32 DW/MB TK (FR.614, PAS)	400 x 600	2
N33 DW/MB TK (FR.634, PAS)	400 x 600	2
N34 DW/MB TK (FR.654, PAS)	400 x 600	2
N35 DW/MB TK (FR.674, PAS)	400 x 600	2
N36 DW/MB TK (FR.694, PAS)	400 x 600	2
N37 DW/MB TK (FR.714, PAS)	400 x 600	2
N38 DW/MB TK (FR.734, PAS)	400 x 600	2
N39 DW/MB TK (FR.754, PAS)	400 x 600	2
N40 DW/MB TK (FR.774, PAS)	400 x 600	2
N41 DW/MB TK (FR.794, PAS)	400 x 600	2
N42 DW/MB TK (FR.814, PAS)	400 x 600	2
N43 DW/MB TK (FR.834, PAS)	400 x 600	2
N44 DW/MB TK (FR.854, PAS)	400 x 600	2
N45 DW/MB TK (FR.874, PAS)	400 x 600	2
N46 DW/MB TK (FR.894, PAS)	400 x 600	2
N47 DW/MB TK (FR.914, PAS)	400 x 600	2
N48 DW/MB TK (FR.934, PAS)	400 x 600	2
N49 DW/MB TK (FR.954, PAS)	400 x 600	2
N50 DW/MB TK (FR.974, PAS)	400 x 600	2
N51 DW/MB TK (FR.994, PAS)	400 x 600	2
N52 DW/MB TK (FR.1014, PAS)	400 x 600	2
N53 DW/MB TK (FR.1034, PAS)	400 x 600	2
N54 DW/MB TK (FR.1054, PAS)	400 x 600	2
N55 DW/MB TK (FR.1074, PAS)	400 x 600	2
N56 DW/MB TK (FR.1094, PAS)	400 x 600	2
N57 DW/MB TK (FR.1114, PAS)	400 x 600	2
N58 DW/MB TK (FR.1134, PAS)	400 x 600	2
N59 DW/MB TK (FR.1154, PAS)	400 x 600	2
N60 DW/MB TK (FR.1174, PAS)	400 x 600	2
N61 DW/MB TK (FR.1194, PAS)	400 x 600	2
N62 DW/MB TK (FR.1214, PAS)	400 x 600	2
N63 DW/MB TK (FR.1234, PAS)	400 x 600	2
N64 DW/MB TK (FR.1254, PAS)	400 x 600	2
N65 DW/MB TK (FR.1274, PAS)	400 x 600	2
N66 DW/MB TK (FR.1294, PAS)	400 x 600	2
N67 DW/MB TK (FR.1314, PAS)	400 x 600	2
N68 DW/MB TK (FR.1334, PAS)	400 x 600	2
N69 DW/MB TK (FR.1354, PAS)	400 x 600	2
N70 DW/MB TK (FR.1374, PAS)	400 x 600	2
N71 DW/MB TK (FR.1394, PAS)	400 x 600	2
N72 DW/MB TK (FR.1414, PAS)	400 x 600	2
N73 DW/MB TK (FR.1434, PAS)	400 x 600	2
N74 DW/MB TK (FR.1454, PAS)	400 x 600	2
N75 DW/MB TK (FR.1474, PAS)	400 x 600	2
N76 DW/MB TK (FR.1494, PAS)	400 x 600	2
N77 DW/MB TK (FR.1514, PAS)	400 x 600	2
N78 DW/MB TK (FR.1534, PAS)	400 x 600	2
N79 DW/MB TK (FR.1554, PAS)	400 x 600	2
N80 DW/MB TK (FR.1574, PAS)	400 x 600	2
N81 DW/MB TK (FR.1594, PAS)	400 x 600	2
N82 DW/MB TK (FR.1614, PAS)	400 x 600	2
N83 DW/MB TK (FR.1634, PAS)	400 x 600	2
N84 DW/MB TK (FR.1654, PAS)	400 x 600	2
N85 DW/MB TK (FR.1674, PAS)	400 x 600	2
N86 DW/MB TK (FR.1694, PAS)	400 x 600	2
N87 DW/MB TK (FR.1714, PAS)	400 x 600	2
N88 DW/MB TK (FR.1734, PAS)	400 x 600	2
N89 DW/MB TK (FR.1754, PAS)	400 x 600	2
N90 DW/MB TK (FR.1774, PAS)	400 x 600	2
N91 DW/MB TK (FR.1794, PAS)	400 x 600	2
N92 DW/MB TK (FR.1814, PAS)	400 x 600	2
N93 DW/MB TK (FR.1834, PAS)	400 x 600	2
N94 DW/MB TK (FR.1854, PAS)	400 x 600	2
N95 DW/MB TK (FR.1874, PAS)	400 x 600	2
N96 DW/MB TK (FR.1894, PAS)	400 x 600	2
N97 DW/MB TK (FR.1914, PAS)	400 x 600	2
N98 DW/MB TK (FR.1934, PAS)	400 x 600	2
N99 DW/MB TK (FR.1954, PAS)	400 x 600	2
N100 DW/MB TK (FR.1974, PAS)	400 x 600	2

Design Assessment Action has been extended to cover.
 Fujian Southeast Shipyard, hull: DNV75M-11/12
 According to extension of approval letter
 Refer STS1987531 dated 17 January 2013

REVIEWED as indicated in ABS letter

NOTES-
 1. ALL THE HINGED WATERTIGHT DOORS BELOW MAIN DECK TO BE FITTED INDICATORS ON THE BRIDGE AND ARE TO BE PROVIDED WITH A NOTICE TO BE ATTACHED ON THE BRIDGE AND THE DOORS TO BE KEPT CLOSED AS SEA.*
 2. THE W.T. DOORS TO BE PROVIDED WITH NOTICE WHICH IS TO BE ATTACHED TO EACH SUCH CLOSING APPLIANCE TO THE EFFECT THAT IT IS TO BE KEPT CLOSED.*
 3. WATERTIGHTNESS TO BE SATISFACTORY TO THE SURVEYOR.
 4. THE W.T. DOORS WITH ONE WAY GREY ARROW ARE COMPARED WITH GPS.
WATERTIGHTNESS TO BE SATISFACTORY TO THE SURVEYOR - AS SANCTIONED BY ABS.

WEATHERTIGHTNESS TO BE SATISFACTORY TO THE SURVEYOR - AS SANCTIONED BY ABS.
 SOME WATERTIGHT DOOR OR SHOCK MATH ROW ARMED AS NON-WATERTIGHT (UNARMED) 20.01.17
 ENGINE ROOM ACCESS TRUNK REMOVED
 UPRIGHT AS NEW CAL. & ARMED AS PER ABS COMMENTS URMN 19.10.16
 DETAILS OF MODIFICATION BY DATE

ARRANGEMENT PLAN
 (W.T. DOOR, HATCH, MANHOLE & SIDE SCUTTLE)

KHIAM CHUAN MARINE PTE LTD
 18, HILLVIEW TERRACE, SINGAPORE 669226
 TEL: 67753383 (6 LINES) FAX: 67753788
 EMAIL: kchiamb@kchiamb.com.sg

75m PLATFORM SUPPLY VESSEL

CLASSIFICATION	SCALE	DRAWING NUMBER	REV
UNAN	1:125	KCW/0623-S5	4