

MV JON SNOW

Specification File



PLATFORM SUPPLY VESSEL (PSV)

MV JON SNOW is a state-of-the-art platform supply vessel that utilized for supporting offshore activities.

- 50 Pax Accommodation
- 643m³ Deck Space
- 5.5T/m² Deck Strength
- DP2 Platform Supply Vessel (75m)

CONTACT

E-mail address

info@ejovigroup.com
jonsnow@ejovigroup.com

MV JON SNOW PSV

VESSEL MAIN PARTICULARS

Vessel Name	MV JON SNOW
Manager	Ejovi Dredging And Marine Services Limited
Owner	Ejovi Dredging And Marine Services Limited
Vessel design	Fujian South East Shipyard, China
Type	Platform Supply Vessel (PSV)
Class definition	ABS+ A1(E) Offshore Support Vesse4I, Fire fighting Class 1, +AMS, ACCU, DPS-2
Vessel built	2013
Port of registry	Nigeria
Flag State	Nigeria
IMO Number	9664237
Call Sign	5NXI

ACCOMMODATION

Total number of bunks	50
1 man cabins	14 Cabins
2 man cabins	36 Cabins
Hospital	1

GENERATORS

Bow thrusters	2X10 Tons Thruster, approx 600Kw, CPP
Shaft generators make	Leroy Somer LSAM 50.2VL10
Shaft Generator Capacity	2X1000kw
Aux generators capacity	3X450 Kw diesel driven, 415v/3ph/50Hz, CAT C18
EM generators Make	Caterpillar
EM generators capacity	1X90kw, CAT C4.4

PRINCIPAL DIMENSIONS

LOA	75M
Breadth Moulded	17.25m
Depth Moulded	8.00m
Maximum Draft	6.50m
Clear Deck Area	643m2
Deck Cargo	1200T
Deck Strength	5.5T/m2 uniform loading
Gross Tonnage	2899T
Net Tonnage	869T

PROPULSION

Main Engine	Niigata 8L28H
Propeller	2X3000HP @ 750RPM
Drive type Shaft	Shaft Diesel
Fuel Type MGO/HFO	MGO

THRUSTERS

Bow Thrusters	2X10 Tons Thruster, approx 600Kw, CPP
---------------	---------------------------------------

MV JON SNOW PSV

PRINCIPAL DIMENSION

Service Speed	10 Knots
Full Speed	13 knots
On DP (under average conditions)	
Electricity Supply	220v

CARGO DECK

Deck space	643m3
Deck Cargo	1200T
Deck Strength	5.5 T/m2

CAPACITIES

Fuel Oil	1000m3
Fresh Water	500m3
Ballast/Drill Water	1500m3
Liquid Mud	600m3
Cement Tank	226m3
Freezer/Chiller	10m3/10m3
Foam/Detergent	14m3/14m3

NAVIGATION AND COMMUNICATION EQUIPMENT

Inmarsat - C	1XFuruno Felcom -15
VHF Radio	2XFuruno FM-8800S
NAVTEX Rec	1XFuruno NX-700B
SART	2XMcMurdo S4
EPIRB	2XMcMurdo E5
Portable VHF Radios	3XMcMurdo R2
Radar	2XFuruno FAR2117 & FAR2137
Echo Sounder	1XFuruno FE-700
DGPS	1XFuruno GP - 150
Gyrocompass	3XAnschutz 22GG/GGM
Auto pilot	1XAnschutz PilotStar D
Magnetic Compass	1xLilley-Gillie Mk2000
Weather Fax	1XFuruno FAX-408
Speed Log	1XFuruno DS-80
Wind Indicator	1XGill Ultrasonic
AIS	1XFuruno FA-150
DP	DP2 System Kongsberg
Joystick	1XKongsberg
PA Talkback System & Self Powered Tel	

FIRE FIGHTING & ANTI-POLLUTION EQUIPMENT

External:

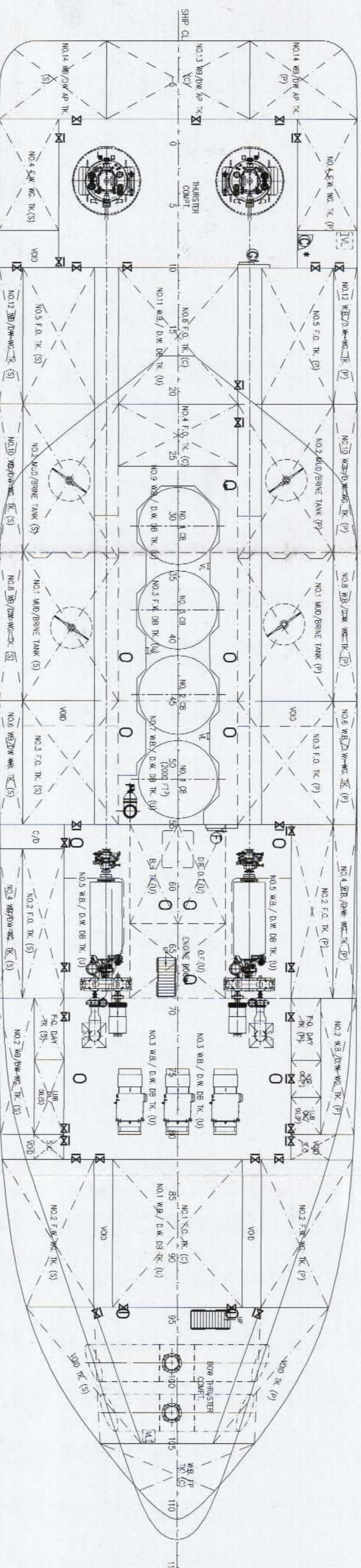
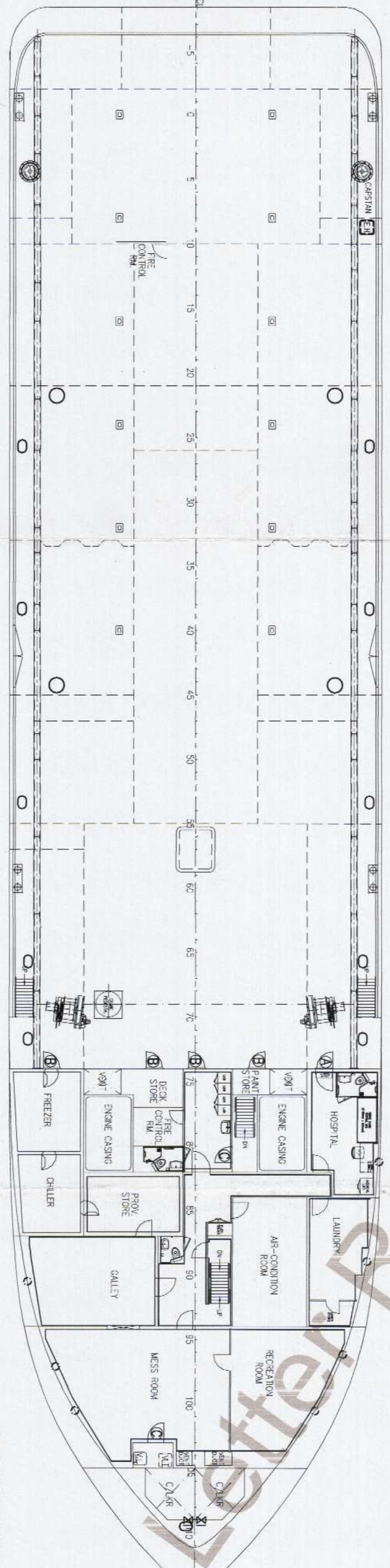
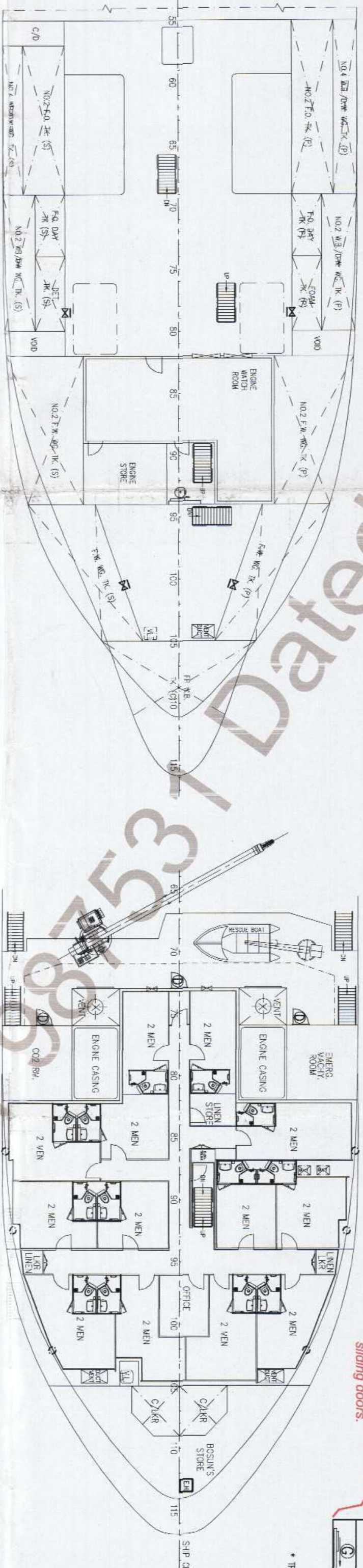
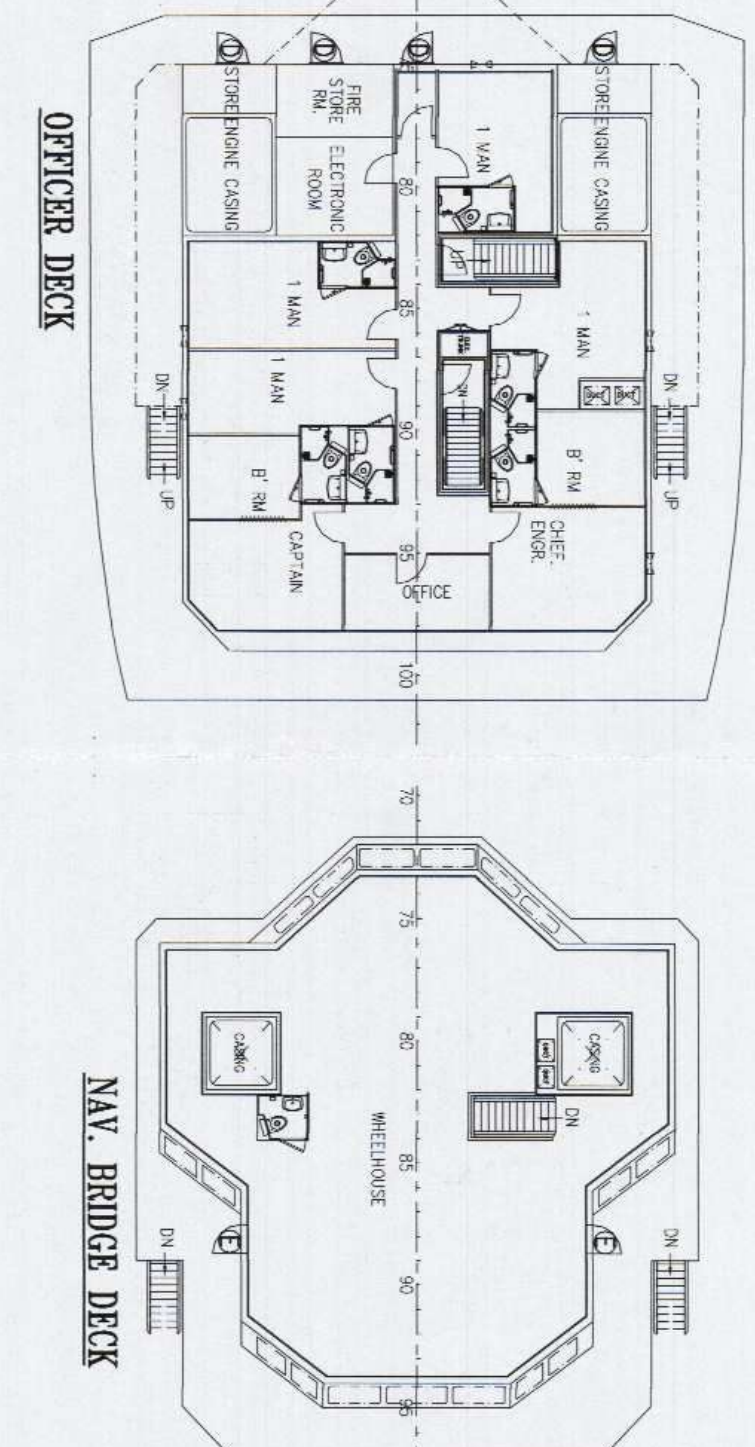
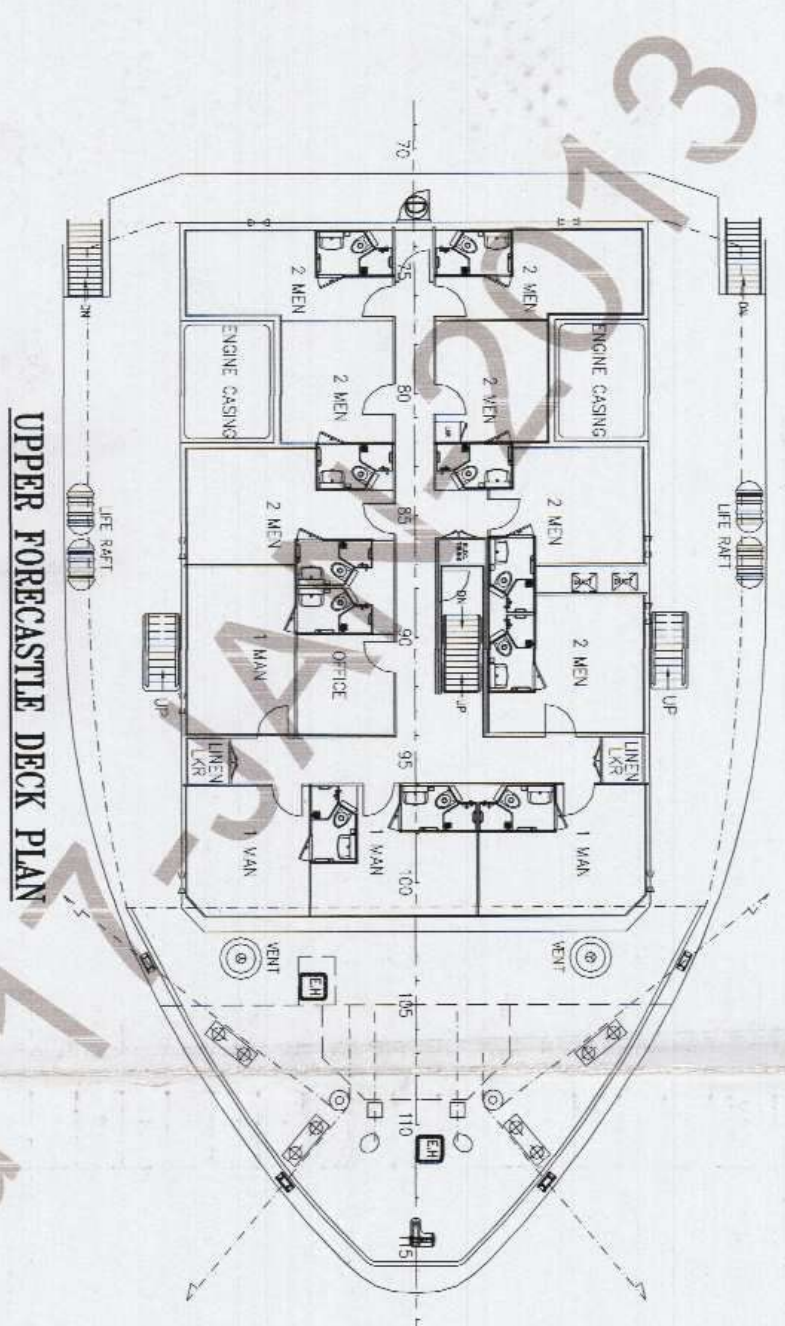
FIFI System	Class 1 with water curtain all round
Fire pump	2X1500m3/hr @12 Bar
Monitors	Water/Foam 2 X fire monitors
Oil Dispersant System	2X Cluster nozzles or overhang boom

Internal:

Emergency Fire Pump	1X35m3/hr @65 head
BA Recharging Comp	1x75 ltrs/min @ 200 Bar
- Co2 System in the Engine Room / Fire Detection & Alarm in Living Spaces And Engine Room	

MISCELLANEOUS

Life Rafts	6X25 persons
Rescue Boat	1X6c/w Outboard Engine
Oily Water Separator	1X1.00m3/hr, Ocean CleanWater/Foam 2 X fire monitors
Water Maker	2X10T/day, Sea recovery corporation
Sewage Treatment Plant	1X50 men/day



SYMBOL	WALL CUT SIZE	QTY.	DOOR TYPE	LOCATION	MANHOLE POSITIONS	DECK CUT SIZE	QTY.
A	1000 x 1400	1	WTD	MAIN DECK - HOSPITAL	NO10 DW/MB TK.(R)25+400.(P&S)	400 x 600	2
B	900 x 1400	1	WTD	MAIN DECK - PASSAGEWAY	NO3 DW/MB TK.(R)38+200.(P&S)	400 x 600	2
C	900 x 1850	1	WTD	MAIN DECK - PAINT STORE	NO5 DW/MB TK.(R)53+200.(P&S)	400 x 600	2
D	900 x 1700	1	WTD	MAIN DECK - FREEZER	NO4 DW/MB TK.(R)53+400.(P&S)	400 x 600	2
E	900 x 1850	1	WTD	MAIN DECK - ENGINE RM. PASSAGEWAY	NO2 DW/MB TK.(R)71+400.(P&S)	400 x 600	2
F	900 x 1675	1	WTD	BELOW DECK - HULLSTEER COMP. V.L. RUMK *	NO1 MD/SHRE TK.(R)44+350.(P&S)	400 x 600	2
G	900 x 1675	1	WTD	FIRE CONTROL PLAN	FP MB TK.(R)09+300.(S)	400 x 600	1
H	900 x 1675	1	WTD	ENGINE ROOM	NO1 F.O. TK.(R)94.(P&S)	400 x 600	1
I	900 x 1675	1	WTD	ENGINE ROOM	NO1 DW/MB TK.(R)94.(P&S)	400 x 600	2
J	900 x 1675	1	WTD	ENGINE ROOM	NO2 DW/MB TK.(R)94.(P&S)	400 x 600	2
K	900 x 1675	1	WTD	ENGINE ROOM	NO2 DW/MB TK.(R)94.(P&S)	400 x 600	2
L	900 x 1675	1	WTD	ENGINE ROOM	NO2 DW/MB TK.(R)94.(P&S)	400 x 600	2
M	900 x 1675	1	WTD	ENGINE ROOM	NO2 DW/MB TK.(R)94.(P&S)	400 x 600	2
N	900 x 1675	1	WTD	ENGINE ROOM	NO2 DW/MB TK.(R)94.(P&S)	400 x 600	2
O	900 x 1675	1	WTD	ENGINE ROOM	NO2 DW/MB TK.(R)94.(P&S)	400 x 600	2
P	900 x 1675	1	WTD	ENGINE ROOM	NO2 DW/MB TK.(R)94.(P&S)	400 x 600	2
Q	900 x 1675	1	WTD	ENGINE ROOM	NO2 DW/MB TK.(R)94.(P&S)	400 x 600	2
R	900 x 1675	1	WTD	ENGINE ROOM	NO2 DW/MB TK.(R)94.(P&S)	400 x 600	2
S	900 x 1675	1	WTD	ENGINE ROOM	NO2 DW/MB TK.(R)94.(P&S)	400 x 600	2
T	900 x 1675	1	WTD	ENGINE ROOM	NO2 DW/MB TK.(R)94.(P&S)	400 x 600	2
U	900 x 1675	1	WTD	ENGINE ROOM	NO2 DW/MB TK.(R)94.(P&S)	400 x 600	2
V	900 x 1675	1	WTD	ENGINE ROOM	NO2 DW/MB TK.(R)94.(P&S)	400 x 600	2
W	900 x 1675	1	WTD	ENGINE ROOM	NO2 DW/MB TK.(R)94.(P&S)	400 x 600	2
X	900 x 1675	1	WTD	ENGINE ROOM	NO2 DW/MB TK.(R)94.(P&S)	400 x 600	2
Y	900 x 1675	1	WTD	ENGINE ROOM	NO2 DW/MB TK.(R)94.(P&S)	400 x 600	2
Z	900 x 1675	1	WTD	ENGINE ROOM	NO2 DW/MB TK.(R)94.(P&S)	400 x 600	2

POSITIONS	DECK CUT SIZE	QTY.
STEERING DECK COMP.	600 x 600	1
V.L. THRU (BOW HULLSTEER COMP.)	600 x 600	1
UPPER FORECASTLE DECK	600 x 600	1
BOWS THRU	600 x 600	1

POSITIONS	OPENING	QTY.
MAIN DECK	4300	7
FORECASTLE DECK	4300	6

POSITIONS	DECK CUT SIZE	QTY.
NO1 DW/MB TK.(R)15.(S)	400 x 600	1
NO2 DW/MB TK.(R)27+300.(U)	400 x 600	1
NO3 FW DB TK.(R)41+300.(P&S)	400 x 600	2
NO2 DW/MB DB TK.(R)47+300.(P&S)	400 x 600	2
NO5 DW/MB DB TK.(R)54+300.(P&S)	400 x 600	2
NO3 DW/MB DB TK.(R)75+300.(P&S)	400 x 600	2
DBTY DL TK.(R)81+300.(P)	400 x 600	1
BH TK.(R)81+300.(S)	400 x 600	1
OVER FLOW TK.(R)87+300.(P)	400 x 600	1
B/7 VDB TK.(R)94+300.(P&S)	400 x 600	2

Design Assessment Action has been extended to cover:
 Fujian Southeast Shipyard, hull: DN75W-11/12
 According to extension of approval letter Refers STS/987531 dated 17 January 2013

REVIEWED
 as indicated in ABS letter



KHIAM CHUAN MARINE PTE LTD
 13, HILLVIEW TERRACE, SINGAPORE 659226
 TEL: 67535383 (6 LINES) FAX: 67253728
 E-MAIL: khiamchuan@kcm.com.sg

75m PLATFORM SUPPLY VESSEL

ARRANGEMENT PLAN
 (W.L. DOOR, HATCH, MANHOLE & SIDE SCUTTLE)

CLASS/CLASH	SCALE	HELD NO.
ULSAN	1:125	DN75W-11/12/3/5
DESIGNER	CHECKED	SCALE
ULSAN	SCALE	DRAWING NUMBER
	1:125	KCW/0823-S5
		REV
		4

NOTES:-

- ALL THE HINGED WATERTIGHT DOORS BELOW MAIN DECK TO BE FITTED IN ACCORDANCE WITH THE BRIDGE AND ARE TO BE PROVIDED WITH THE HINGED DOOR AT SEA.
- OTHER WATERTIGHT DOORS AND CLOSING APPLIANCES AS WHICH IS TO BE ATTACHED TO EACH SUCH CLOSING APPLIANCE TO THE EFFECT THAT IT IS TO BE KEPT CLOSED.
- WATER-TIGHTNESS TO BE SATISFACTORY TO THE SUPERVISOR.
- THE W.L. DOORS WITH ONE WAY DEVEY ARROW ARE COMPLETED WITH GPS.

WATER-TIGHTNESS TO BE SATISFACTORY TO THE SUPERVISOR
 - AS SHOWN BY ABS

WEATHER-TIGHTNESS TO BE SATISFACTORY TO THE SUPERVISOR
 - AS SHOWN BY ABS

1. ALL THE HINGED WATER-TIGHT DOORS WITH ONE WAY DEVEY ARROW ARE COMPLETED WITH GPS.

2. ALL THE HINGED WATER-TIGHT DOORS WITH ONE WAY DEVEY ARROW ARE COMPLETED WITH GPS.

3. ALL THE HINGED WATER-TIGHT DOORS WITH ONE WAY DEVEY ARROW ARE COMPLETED WITH GPS.

4. ALL THE HINGED WATER-TIGHT DOORS WITH ONE WAY DEVEY ARROW ARE COMPLETED WITH GPS.

REVISIONS:

NO.	DESCRIPTION	DATE
1	ISSUED FOR APPROVAL	17/1/13
2	REVISED AS PER COMMENTS	17/1/13
3	REVISED AS PER COMMENTS	17/1/13
4	REVISED AS PER COMMENTS	17/1/13
5	REVISED AS PER COMMENTS	17/1/13
6	REVISED AS PER COMMENTS	17/1/13
7	REVISED AS PER COMMENTS	17/1/13
8	REVISED AS PER COMMENTS	17/1/13
9	REVISED AS PER COMMENTS	17/1/13
10	REVISED AS PER COMMENTS	17/1/13
11	REVISED AS PER COMMENTS	17/1/13
12	REVISED AS PER COMMENTS	17/1/13
13	REVISED AS PER COMMENTS	17/1/13
14	REVISED AS PER COMMENTS	17/1/13
15	REVISED AS PER COMMENTS	17/1/13
16	REVISED AS PER COMMENTS	17/1/13
17	REVISED AS PER COMMENTS	17/1/13
18	REVISED AS PER COMMENTS	17/1/13
19	REVISED AS PER COMMENTS	17/1/13
20	REVISED AS PER COMMENTS	17/1/13
21	REVISED AS PER COMMENTS	17/1/13
22	REVISED AS PER COMMENTS	17/1/13
23	REVISED AS PER COMMENTS	17/1/13
24	REVISED AS PER COMMENTS	17/1/13
25	REVISED AS PER COMMENTS	17/1/13
26	REVISED AS PER COMMENTS	17/1/13
27	REVISED AS PER COMMENTS	17/1/13
28	REVISED AS PER COMMENTS	17/1/13
29	REVISED AS PER COMMENTS	17/1/13
30	REVISED AS PER COMMENTS	17/1/13