

VESSELS

Anchor / Handling /
Tug Supply Vessel



JV Adaba

Vessel Info

Full specification overleaf

JV Adaba is the most powerful 140mT Bollard Pull Anchor Handler operating in Nigeria:

- DP2 Anchor Handling Tug Supply Vessel
- Deck space of 463m²
- LOA 70m Firefighting (Class 1)
- Gross tonnage 2705.00mt
- +A1(E) Towing Vessel
- Surfer Ladder

Fast Facts

- Large Capacity supply vessel
- Firefighting class 1
- EFMS (Electronic Fuel Monitoring System) installed

NigerStar 7 Adaba

General Information

Type	Anchor Handling Tug Supply vessel
Classification	+A1 (E), Towing vessel, Fire-Fighting Vessel Class 1, Offshore Supper Vessel AH, AMS, DPS-2 Nigeria
Flag	

Principal Dimensions

Length Overall (m)	70m
Summer Draft	6.10 m
Deadweight	2114.74 mt
Gross Tonnage	2705.00 mt
Lightship	2539.51 mt

Power

BHP	10880
KW	8000
Bollard Pull	140T

Thruster

Bow Thruster	2 x 680 kW
Stern Thruster	1 x 680 kW

Cargo Deck

Deck Space	462 m²
Deck Strength	7.5 mt/m²

Cargo Capacity

Fuel Oil	1239 m³
Base Oil	112 m³
Fresh Water	389 m³
Drill Water	420 m³
Liquid Mud	489 m³
Dry Bulk	227 m³
Chain Locker	PS = 78.5 m³
SB	85.5 m³

EFMS (Electronic Fuel Monitoring System - Royston) installed

Deck Crane

Port Crane Crane	Telescopic Boom 2.2 mt
---------------------	-----------------------------------

AH Winch

Type Gear	Brattvaag SL300W/BSL300W Drive Hoist First Layer 300 mt @ 0-7 m/min 450 mt
Brake Holding	

Tow / Work Winch t

Type Drive Hoist First Layer Brake First Layer	Brattvaag SL300W/BSL300W 300 mt @ 0-7 m/min 450 mt
--	---

DP System

Class Type	DPS-2 Kongsberg
---------------	----------------------------

Accommodation

Total Number of Bunk	38 + 14 Marine Crew (total 52)
----------------------	---------------------------------------



info@ejovigroup.com

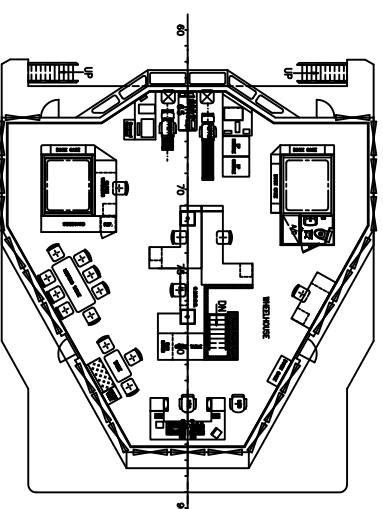


www.ejovigroup.com

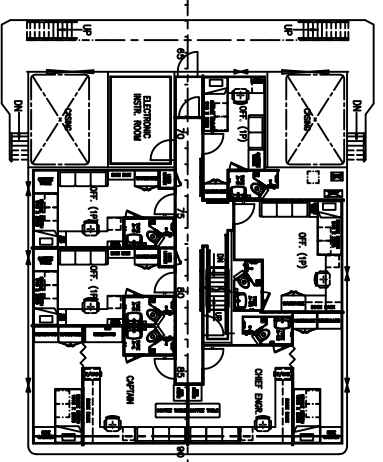
PRINCIPAL DIMENSIONS

LENGTH (O.A.)	70.000 M
LENGTH (W.L.P.)	66.800 M
LENGTH (B.P.)	61.800 M
BEAM (M.L.D.)	16.800 M
DEPTH (M.L.D.)	7.500 M
DRAFT MAXIMUM	6.100 M
TOTAL DWT AT 6.10M	2000 TONS
FUEL OIL	1260 M ³
FRESH WATER	510 M ³
DRILL WATER / W.B.	110 M ³
BASE OIL	490 M ³
MUD	450 M ³
CLEAR DECK AREA	800 M ²
DECK CARGO (DECK LOADING = 7.5T/M ²)	226 M ³
DRY BULK TANKS (4x2000 FT ³ = 8000 FT ³)	2 X 5438 BHP
MAIN PROPULSION ENGINE (2 X 4000 KW)	14.0 KNOTS
SPEED (TRIALS)	125 TONS
BOLLARD PULL	52 MEN
COMPLEMENT	

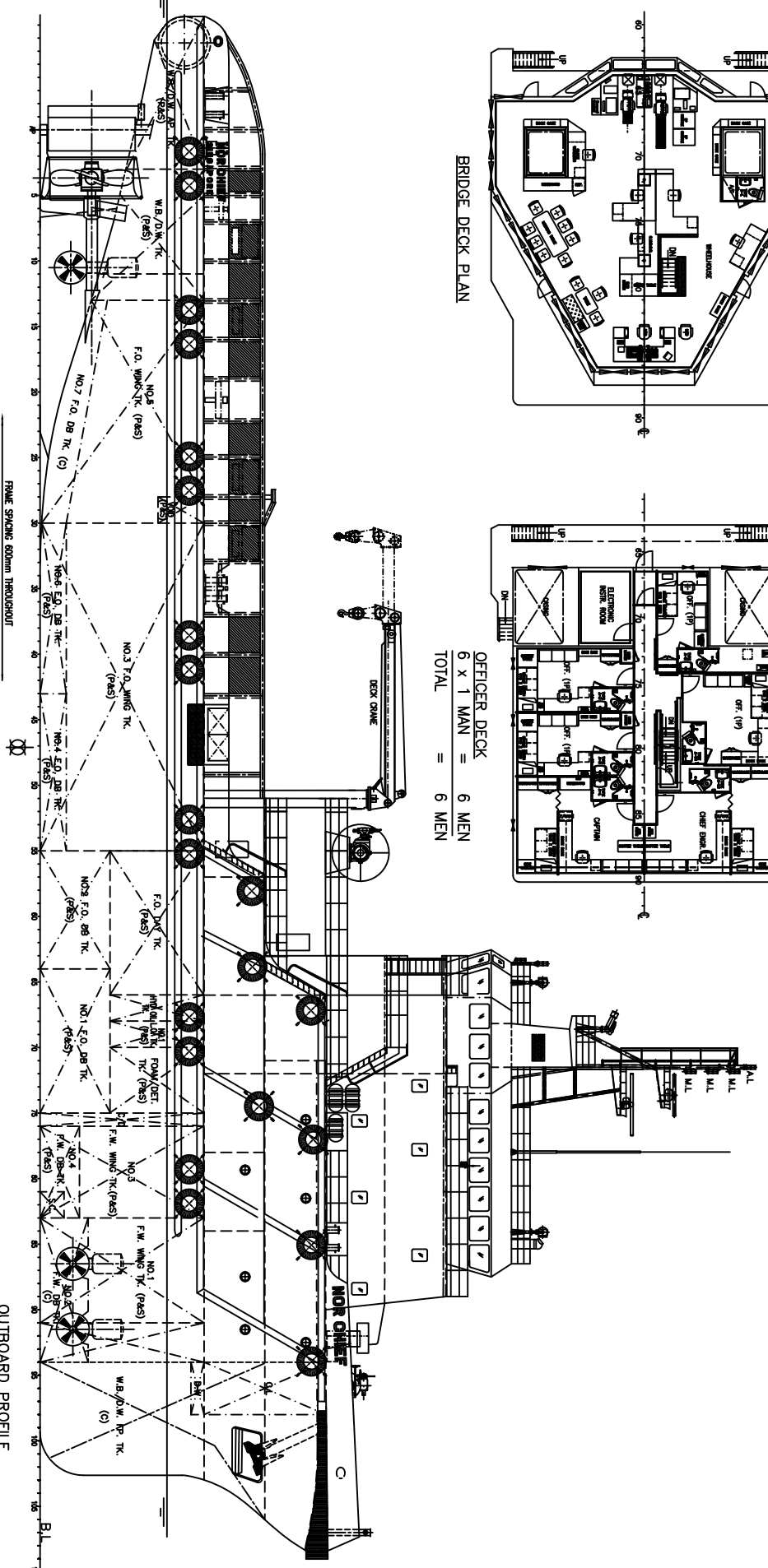
CLASS & NOTATION : ABS + A1 @ "OFFSHORE SUPPORT VESSEL,
FIRE FIGHTING VESSEL CLASS 1" + AMS + DPS-2



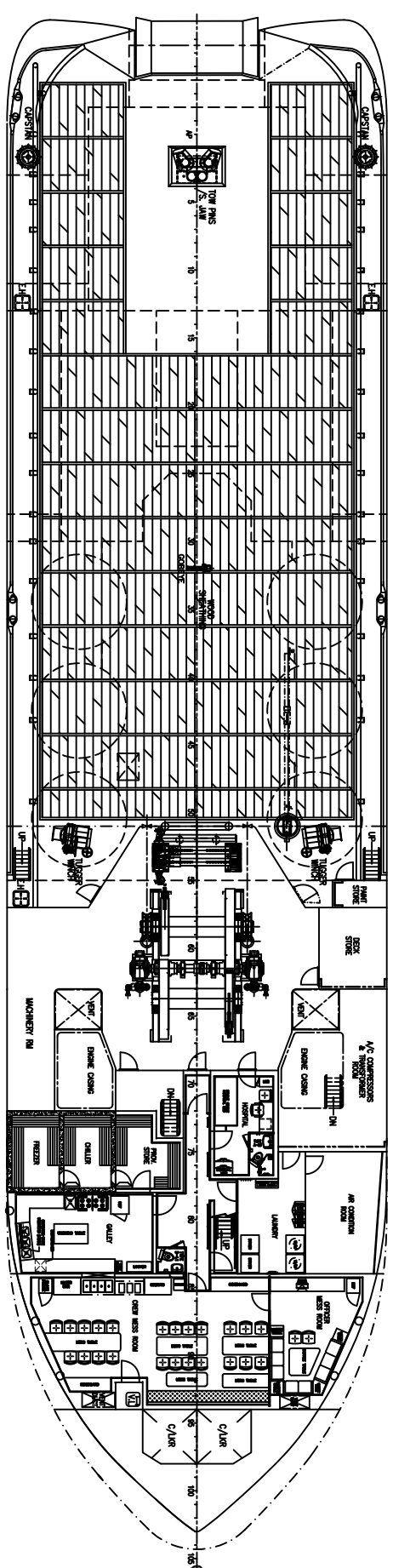
BRIDGE DECK PLAN



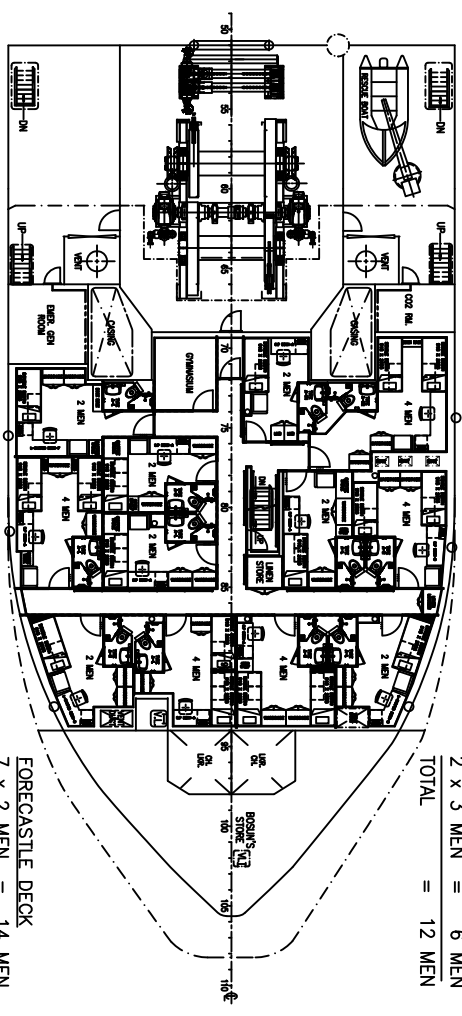
OFFICER DECK 6 MEN
6 x 1 MAN = 6 MEN
TOTAL = 6 MEN



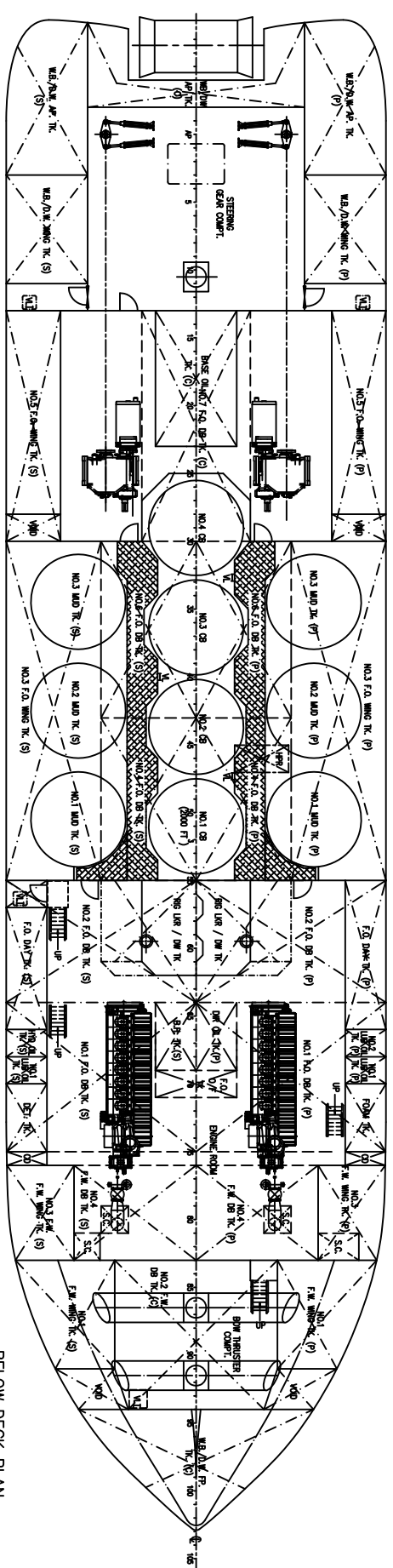
OUTBOARD PROFILE



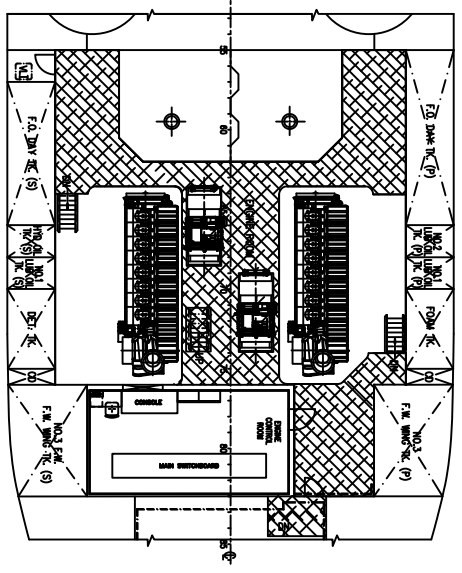
MAIN DECK PLAN



FORECASTLE DECK
7 x 2 MEN = 14 MEN
5 x 4 MEN = 20 MEN
TOTAL = 34 MEN



BELOW DECK PLAN



TWEEN DECK PLAN

Builder
Jaya SHIPBUILDING & ENGINEERING PTE LTD

Solstrad Offshore Asia Pacific Pte Ltd
1A INTERNATIONAL BUSINESS PARK #04-01
11, SINGAPORE 69933
Tel: 65 6371 6888 Fax: 65 6371 6861

Product
JV ADABA
70m ANCHOR HANDLING SUPPLY VESSEL

Client
SOL/869/GA-1

Classification ABS
Scale 1:150
Drawing Number SOL/869/GA-1
Rev. 0

General Arrangement

10-3-16