

KINGS LANDING

Specification File



ANCHOR HANDLING TUG (AHT)

KINGS LANDING is a state-of-the-art anchor handling platform vessel that is utilized for supporting offshore activities.

- 18 Pax Accommodation
- 125 m² Deck Space
- 5T/m² Deck Strength
- 4200HP Anchor Handling Tugs
- 48T Bollard pull

CONTACT

V-sat ship phone bridge	870773103504
E-mail address	info@ejovigroup.com kingslanding@ejovigroup.com

KINGS LANDING

VESSEL MAIN PARTICULARS

Vessel Name	KINGS LANDING
Manager	Ejovi Offshore Limited
Owner	Ejovi Offshore Limited
Vessel design	AHT
Type	AHT
Class definition	ABS+ A1, Circle E, Towing Vessel, AMS,
Vessel built	2010
Port of Registry	Lagos
Flag State	Nigeria
IMO Number	9596193
Call Sign	5NWN8

PRINCIPAL DIMENSIONS

LOA	40.00m
LPP	38.00m
Breadth Moulded	11.80m
Depth Moulded	4.55m
Summer Draft	3.20m
Deck Cargo	166T
Deck Strength	2.6T/m ²
Deadweight	367T
Gross Tonnage	499T
Net Tonnage	149T

ACCOMMODATION

Total number of bunkers **18**

THRUSTERS

Bow Thrusters HRP3001TT FPP PROPELLER+ PULSE SYSTEM 3.5MT

PROPULSION

Main Engine	CATERPILLAR
Propeller	2 x Caterpillar 3516B, 2100 HP @1600rpm each
Drive type Shaft	Shaft Diesel
Fuel Type MGO/HFO	MGO

GENERATORS

Bow thrusters	LEROY SOMER
Aux generators make	Cummins CCFJ350JST
Aux Generator Capacity	3 X 350KW
EM generators Make	Cummins
EM generators capacity	1 X 350KW

KINGS LANDING

PRINCIPAL DIMENSION

Service Speed	7 Knots
Full Speed	12 knots
On DP (under average conditions)	-
Electricity Supply	220v

CARGO DECK

Deck space	125m ²
Deck Cargo	166T
Deck Strength	5T/m ²
Deadweight	367T

TANK CAPACITIES

Fuel Oil	320m ³
Fresh Water	112m ³
Foam tank	9m ³
Sewage	8m ³

NAVIGATION EQUIPMENT

X-band Rader	1 X FURUNO RADAR
S band Rader	1 X FURUNO
Autopilot	1 X NAUTOPILOT NP60
GPS	1 X FURUNO GPS NAVIGATOR GP150
Echo sounder	1 X NAV ECHO SOUNDER FE-700
GMDSS Radios	FURUNO FS-2570
Gyro Compass	3 X DIGITALGYRO STD-22
AIS	1 X Furuno FA-150
Wind guage/Log	1/2

COMMUNICATION EQUIPMENT

MF/HF DSC	2 X FM-8900S
Soare Gypsy's	2
Navtex	1 X NX-700
EPIRB	2 X TRON/60S/60GPS
SART	2 X SART IC-6913A
Inmarsat C	2 X FELCOM 18
Portable VHF	3 X IC-M93D
Portable UHF	-
Weather fax	1 X FuFAX-408

DECK EQUIPMENT

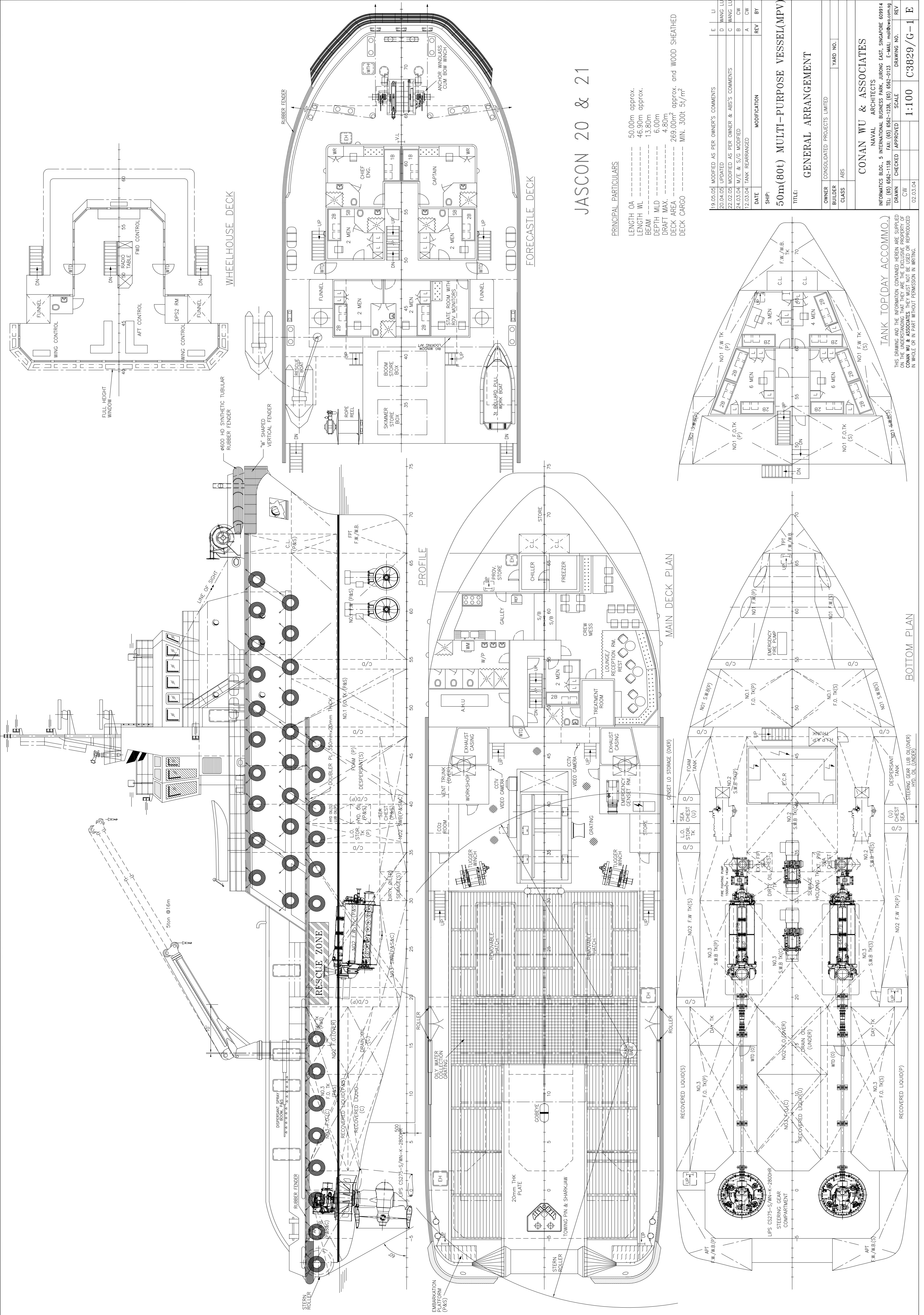
Towing winch	1 x Zicom double drum waterfall
Towing drum	1000 m x 50 mm dia, wire rope brake holding 150T
Drum pull (first layer)	150T x 0 - 6 m/min
Anchor windlass	1 x Zicom winch drum, electrical/hydraulic bow winch pull 4T X 0 ~ 15m/min
External fire-firefighting pump	1 x 200 kW; 475m ³ /hr @50Hz c/w 2 fire monitors

MISCELLANEOUS

Life Rafts	2X20 persons
Provision Crane	3T @ 14M
Number of Lifejackets	24
Number of Survival suits	24
Fire Fighting Class	FFVI

STANDBY/RESCUE

Searchlights	2
Line throwing device	2



JASCON 20 & 21

PRINCIPAL PARTICULARS

LENGTH OA	50.00m approx.
LENGTH WL	46.90m approx.
BEAM	13.80m
DEPTH MLD	6.00m
DRAFT MAX.	4.80m
DECK AREA	269.00m ² approx. and WOOD SHEATHED
DECK CARGO	MIN. 300T 5T/m ²

DATE	MODIFICATION	REV	BY
19.05.05	MODIFIED AS PER OWNER'S COMMENTS	E	LI
20.04.05	UPDATED	D	WANG LU
22.02.05	MODIFIED AS PER OWNER & ABS'S COMMENTS	C	WANG LU
24.03.04	M/E & S/G MODIFIED	B	CW
12.03.04	TANK REARRANGED	A	CW

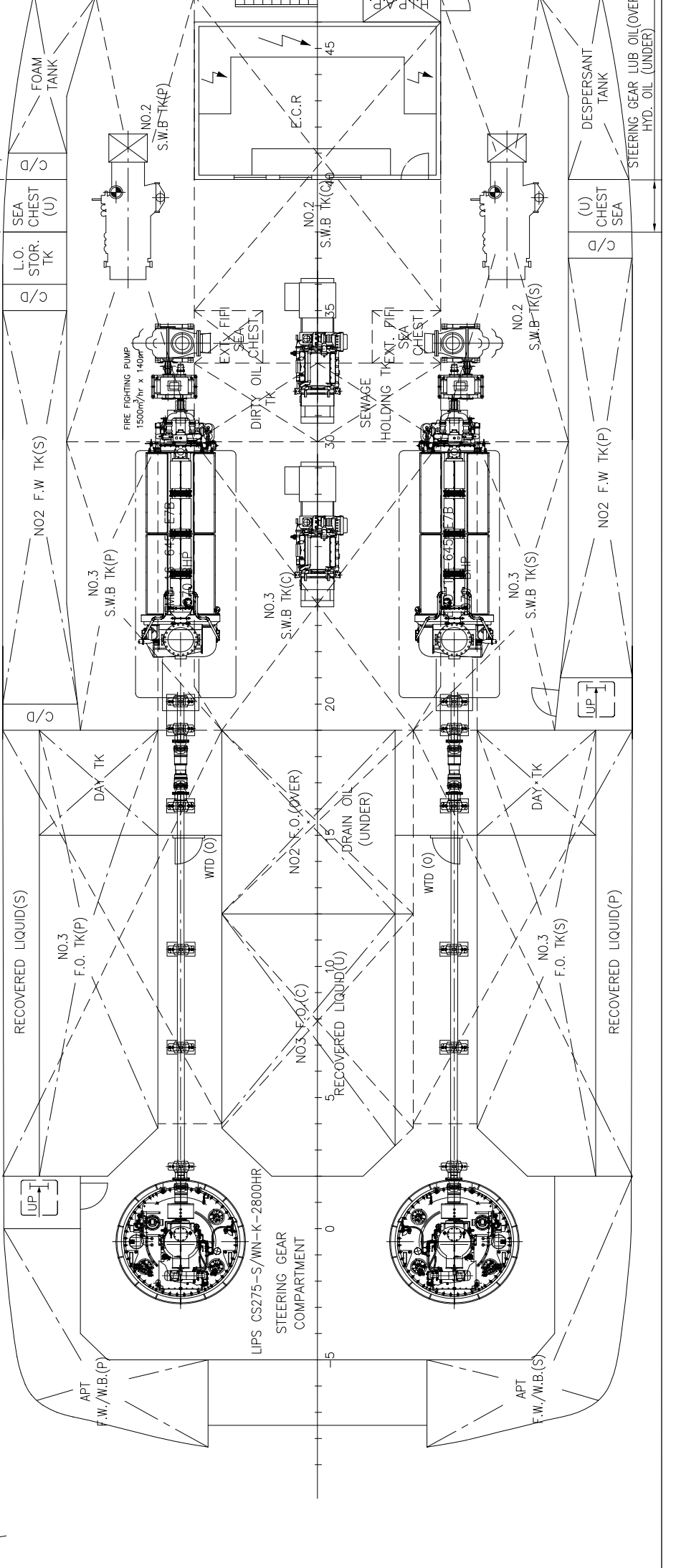
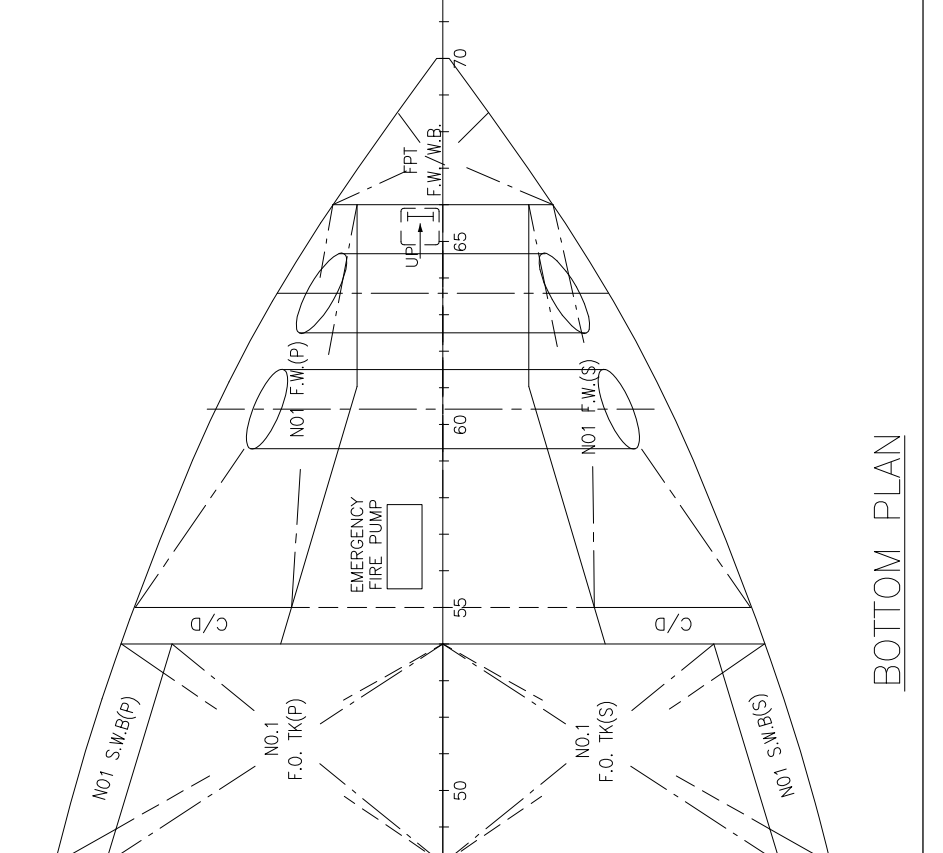
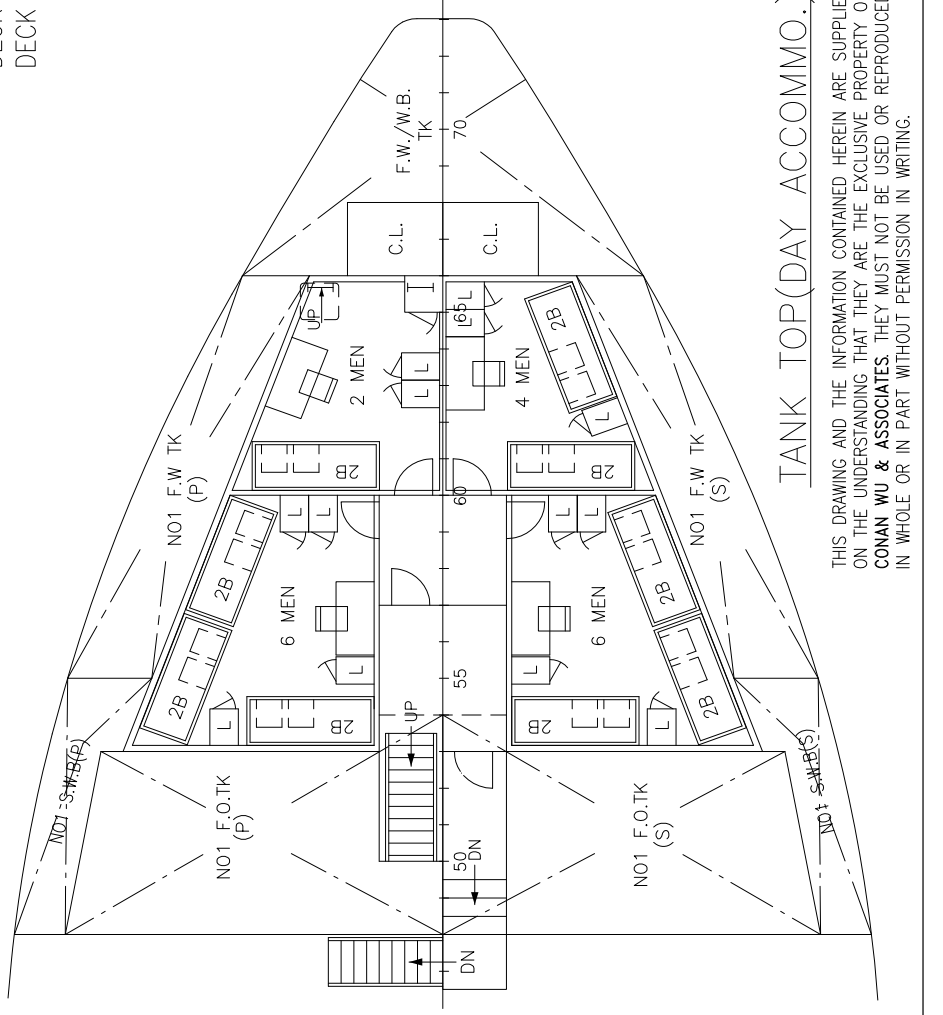
SHIP: **50m (80t) MULTI-PURPOSE VESSEL(MPV)**

TITLE: **GENERAL ARRANGEMENT**

OWNER	CONSOLIDATED PROJECTS LIMITED
BUILDER	ABS
CLASS	ABS
YARD NO.	

CONAN WU & ASSOCIATES
 NAVAL ARCHITECTS
 INFORMATICS BLDG., 5 INTERNATIONAL BUSINESS PARK, JURONG EAST, SINGAPORE 609314
 TEL: (65) 6562-1138 FAX: (65) 6562-1238 (65) 6562-0133 E-MAIL: mol@cw.com.sg

DRAWN	CW	CHECKED	APPROVED
SCALE	1:100	DRAWING NO.	C3929/G-1
REV		DATE	02.03.04



THIS DRAWING AND THE INFORMATION CONTAINED HEREIN ARE SUPPLIED ON THE UNDERSTANDING THAT THEY ARE THE EXCLUSIVE PROPERTY OF CONAN WU & ASSOCIATES. THEY MUST NOT BE USED OR REPRODUCED IN WHOLE OR IN PART WITHOUT PERMISSION IN WRITING.