

# NED STARK

Specification File



## ANCHOR HANDLING TUG AND SUPPLY (AHT)

**NED STARK** is a state-of-the-art anchor handling platform supply vessel that is utilized for supporting offshore activities.

- 34 Pax Accommodation
- 480 m<sup>2</sup> Deck Space
- 7T/m<sup>2</sup> Deck Strength
- 5150HP Anchor Handling Tug
- 65T Bollard Pull

### CONTACT

V-sat ship phone bridge	15057051982
E-mail address	info@ejovigroup.com nedstark@ejovigroup.com

## NED STARK

### VESSEL MAIN PARTICULARS

Vessel Name	NED STARK
Manager	Ejovi Offshore Limited
Owner	Ejovi Offshore Limited
Vessel design	GUANGXIN SHIPBUILDING & HEAVY IND. CO LTD
Type	AHTS/OSV DP2
Class definition	ABS+ A1, Offshore Support Vessel (SUPPLY, FFV1, AH, TOW), AMS, DPS-2, SPS
Vessel built	2014
Port of Registry	Nigeria
Flag State	Nigeria
IMO Number	9742833
Call Sign	5NZX8

### PRINCIPAL DIMENSIONS

LOA	70.10M
Breadth Moulded	15.80m
Depth Moulded	6.50m
Maximum Draft	5.20m
LPP	63.90m
Deck Cargo	750T
Deck Strength	7T/m <sup>2</sup>
Deadweight	2068T
Gross Tonnage	2243T
Net Tonnage	748T

### ACCOMMODATION

<b>Total number of bunker</b>	<b>34</b>
1 Man Cabins - 6	2 Man Cabins - 4
4 Man Cabins - 5	
Hospital Room - 1	Galley - 1 Recreation Room - 1

### PROPULSION

Main Engine	CATERPILLAR DIESEL
Propeller	2 X 1920KW (2X2575BHP) @650RPM
Drive type Shaft	Shaft Diesel
Fuel Type MGO/HFO	MGO

### THRUSTERS

Bow Thrusters	2 X 650Kw 10T ELECT DRIVEN
Stern Thrusters	1 X 650Kw 10T ELECT DRIVEN

### GENERATORS

Bow thrusters	2 X 650Kw 10T ELECT DRIVEN
Shaft generators make	LEROY SOMER
Shaft Generator Capacity	1000KW
Aux generators make	CAT - C18
Aux Generator Capacity	550kw
EM generators Make	Cummins
EM generators capacity	1 X 88kw 440v/360Hz

## NED STARK

### PRINCIPAL DIMENSION

Service Speed	10 Knots (100% RPM)
Full Speed	12.5 knots (100% RPM)
On DP (under average conditions)	-
Electricity Supply	220v

### CARGO DECK

Deck space	480m <sup>2</sup>
Deck Cargo	750T
Deck Strength	7T/m <sup>2</sup>
Deadweight	2068T

### TANK CAPACITIES

Fuel Oil	590m <sup>3</sup>
Fresh Water	450m <sup>3</sup>
Drill water/water ballast	774.7m <sup>3</sup>
Foam	13m <sup>3</sup>
Detergent	13m <sup>3</sup>
Liquid Mud (Can be used for brine)	520m <sup>3</sup>
Cement tanks	5 X 42.5m <sup>3</sup>
EFMS Installed	YES

### NAVIGATION EQUIPMENT

X-band Rader	1 X FURUNO RADAR
S band Rader	1 X FURUNO
Autopilot	1 X NAUTOPILOT NP60
GPS	1 X FURUNO GPS NAVIGATOR GP150
Echo sounder	1 X NAV ECHO SOUNDER FE-700
GMDSS Radios	FURUNO FS-2570
Gyro Compass	3 X DIGITALGYRO STD-22
AIS	1 X Furuno FA-150
Wind guage/Log	3/2

### COMMUNICATION EQUIPMENT

MF/HF DSC	3 X FM-8900S
Soare Gypsy's	1
Navtex	1 X NX-700
EPIRB	1 X TRON/60S/60GPS
SART	2 X SART IC-6913A
Inmarsat C	2 X FELCOM 18
Portable VHF	3 X IC-M93D
Portable UHF	3 X HNN9010A
Weather fax	1 X FuFAX-408

### DECK EQUIPMENT

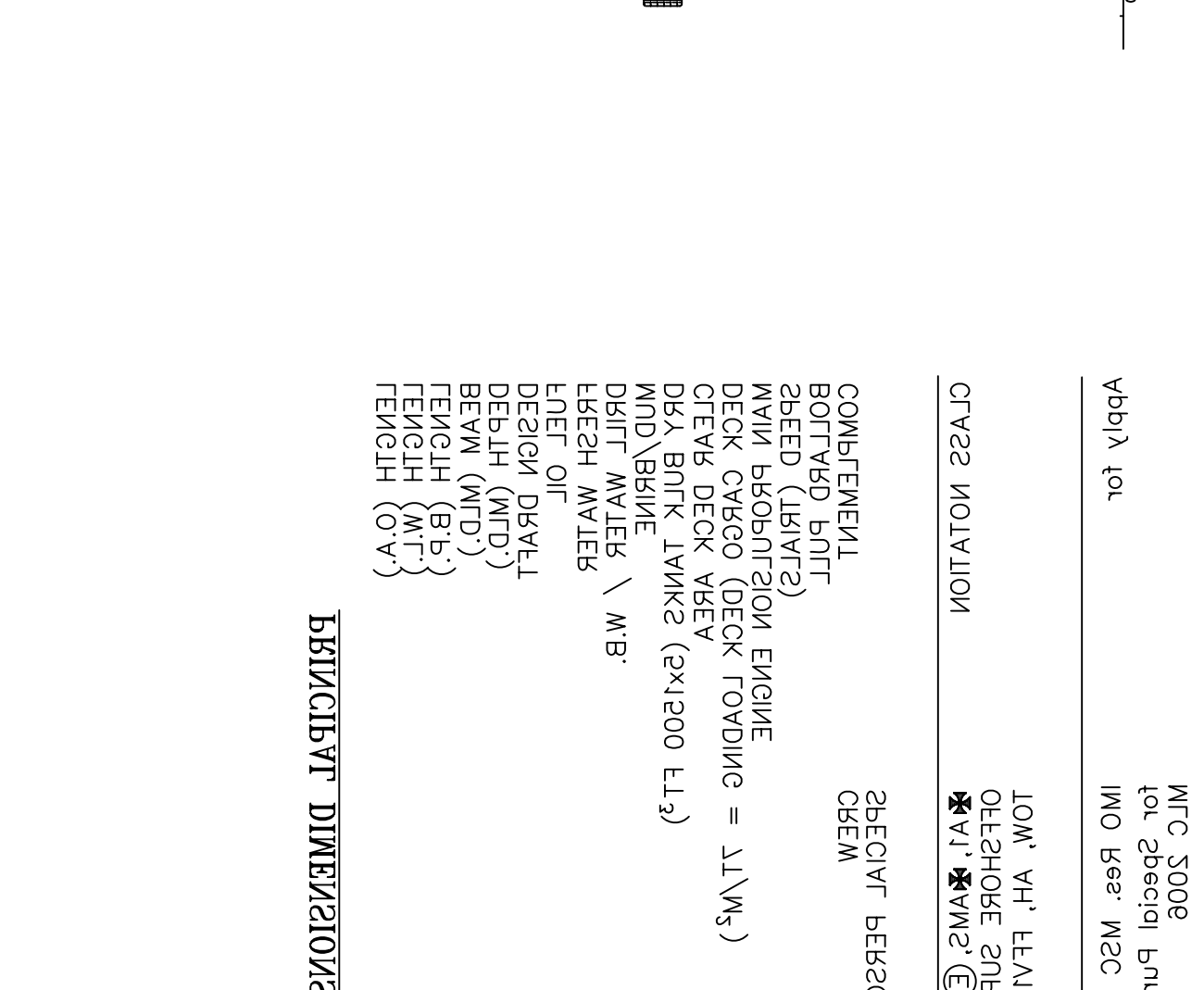
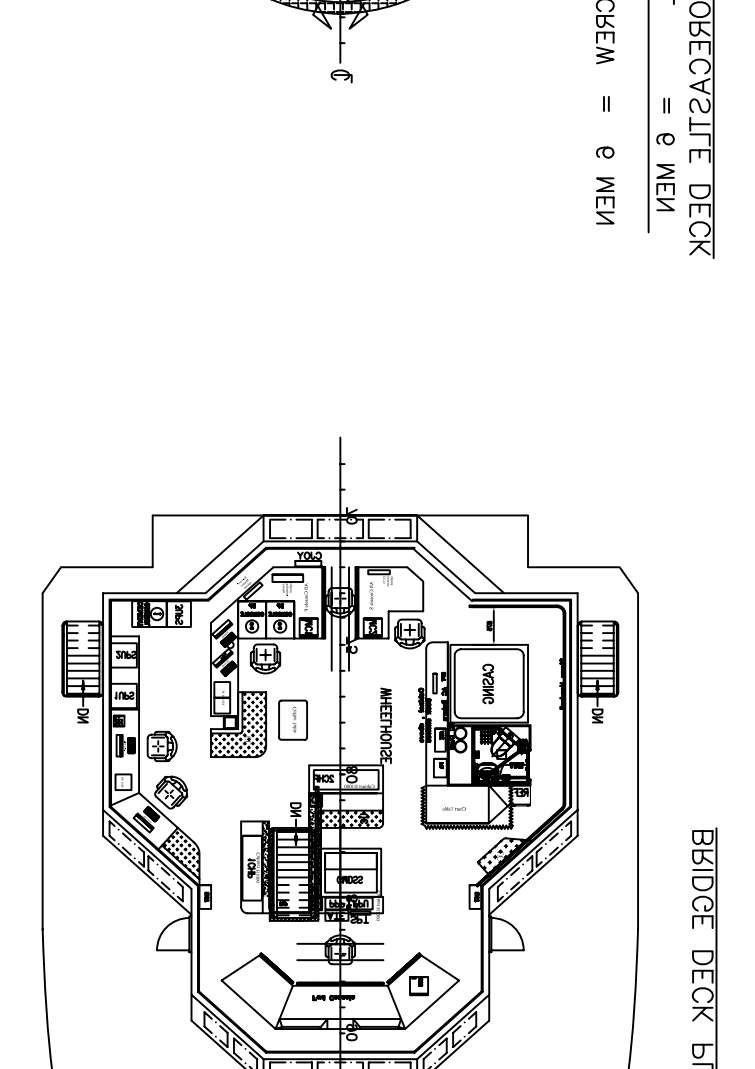
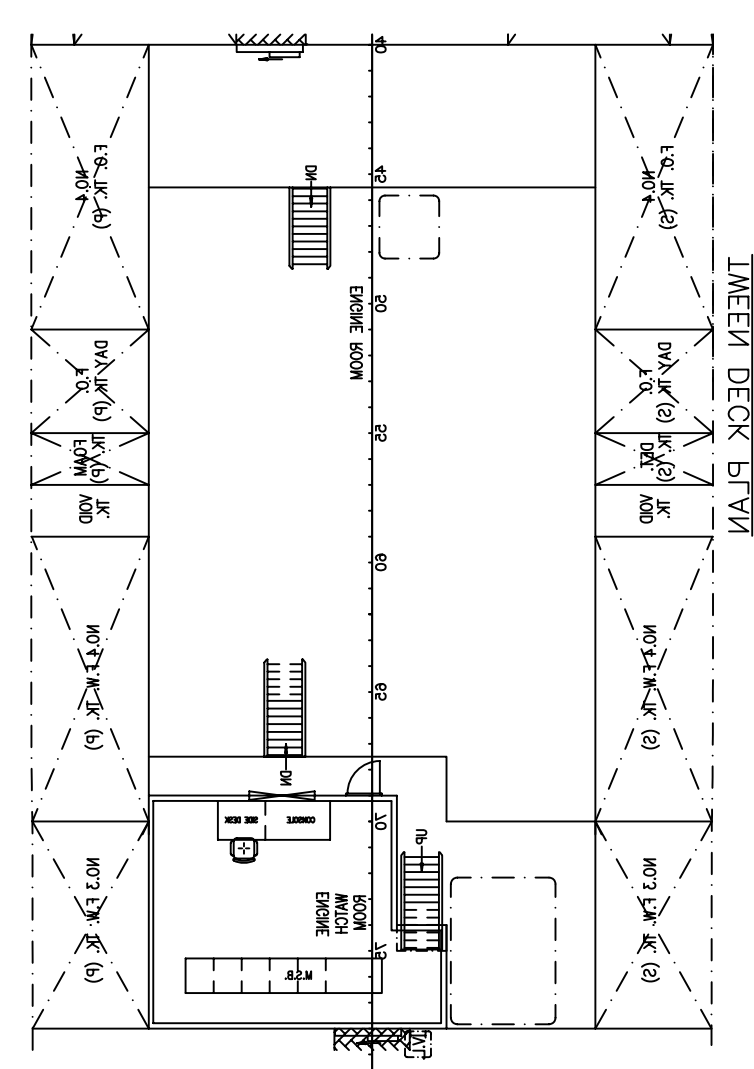
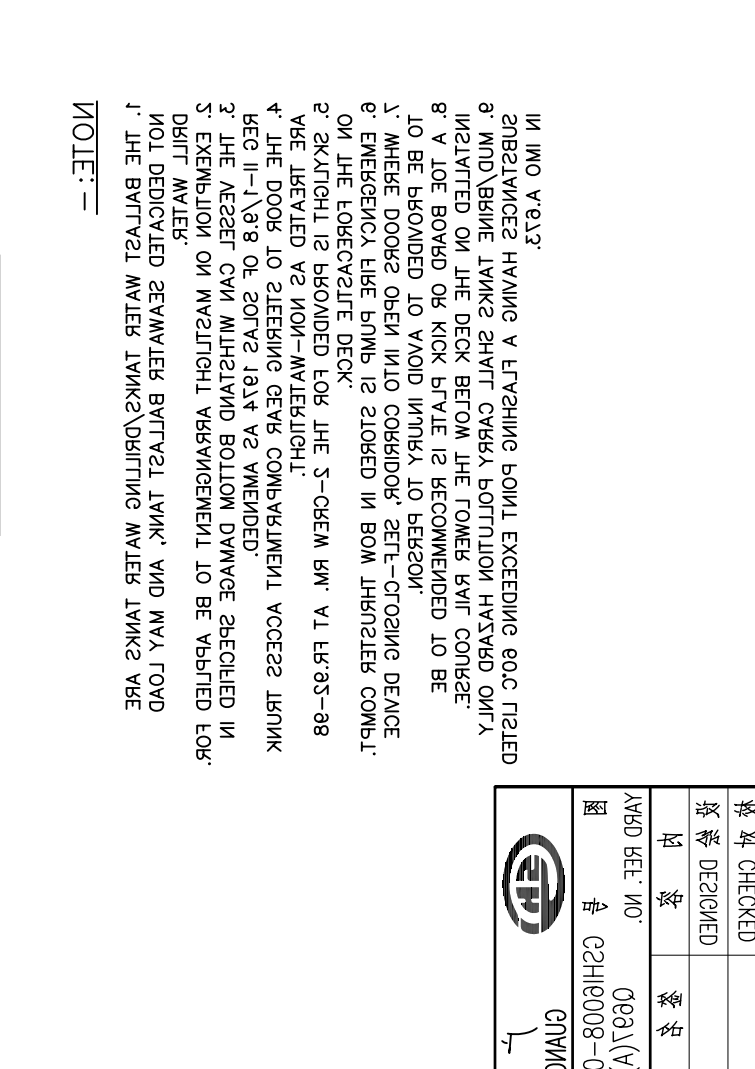
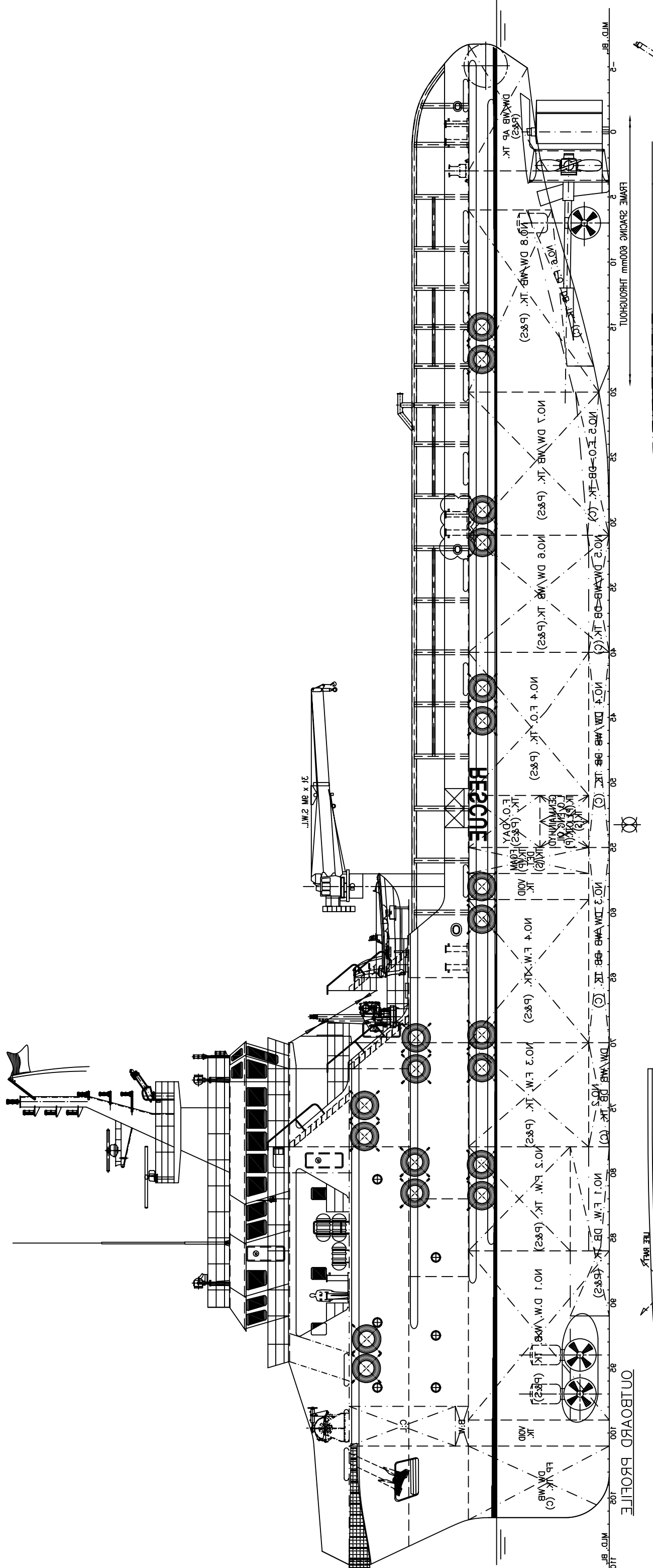
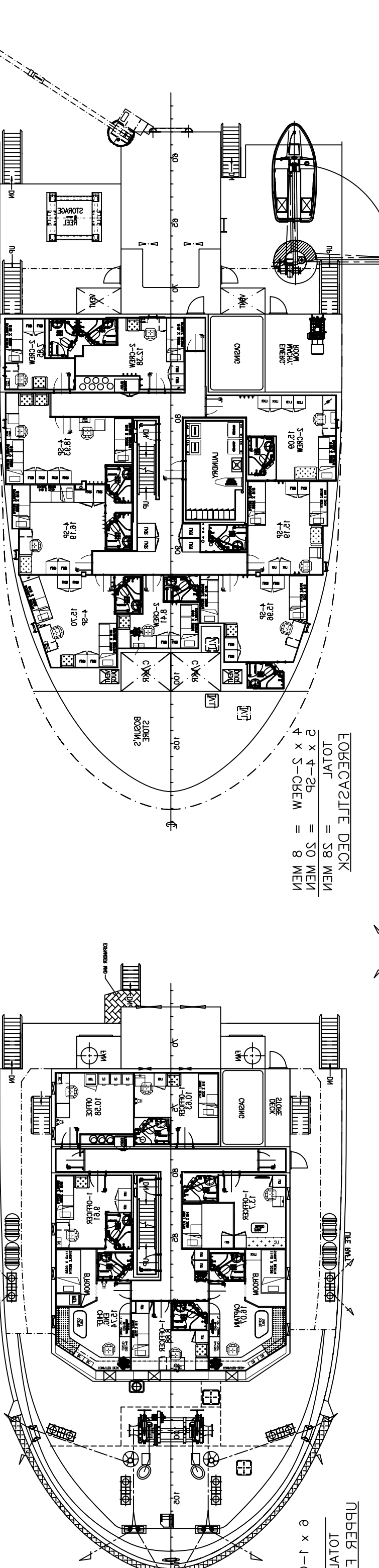
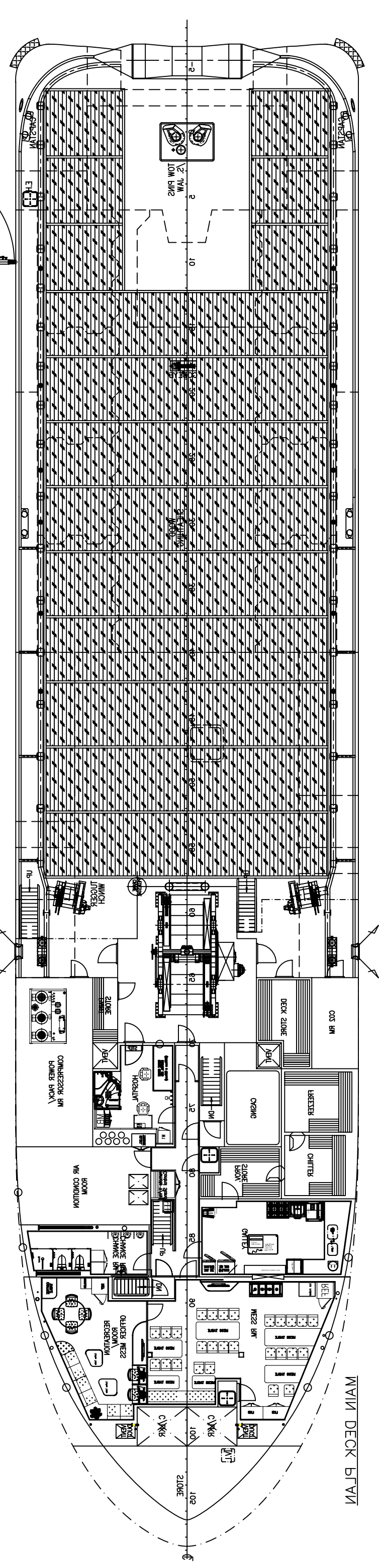
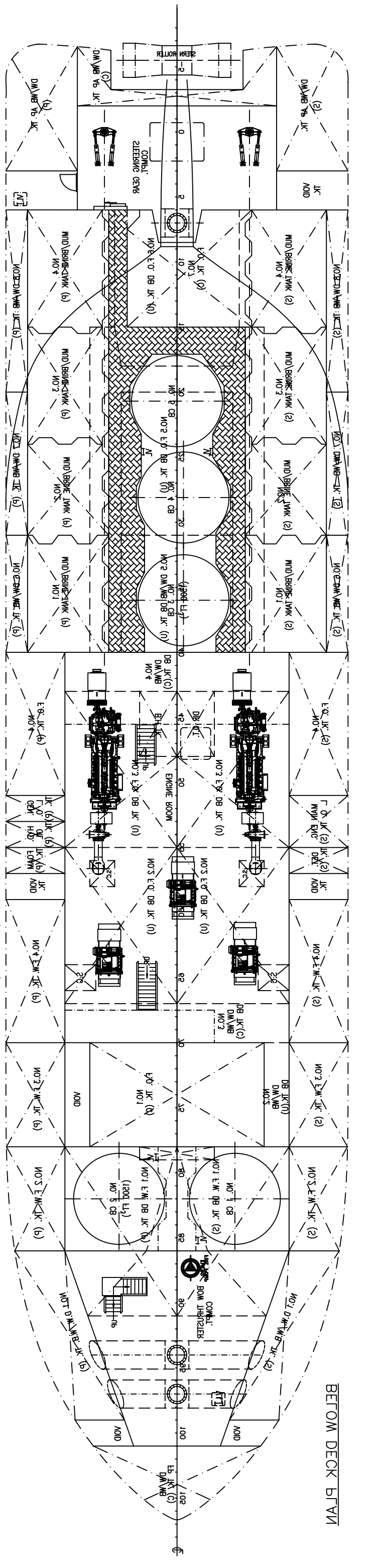
Anchor Handling/ Towing winch	1 x 150T line pull, brake holding 200T
Tugger winch	2 X 10T @15m/min
Towing pins/shark jaw	1 combined set hydraulic type Max. tensioning force: 200T
Capstan	2 X 5T @15m/min
External fire-firefighting pump	1 X electrical Fi-Fi pump 470m <sup>3</sup> /hr @100m head c/w 2 fire monitors, each

### MISCELLANEOUS

Life Rafts	6X20 persons
Provision Crane	1 X JANGSU HAITAI YQ13039 3T SWL 9M
Number of Lifejackets	60
Number of Survival suits	40
Fire Fighting Class	Class 1

### STANDBY/RESCUE

Searchlights	3
Line throwing device	3



- IN TWO VEGET
1. SHIPWAGES HAVING A FLUSHING POINT EXCEEDING 80°C MUST BE ...
  2. ...
  3. ...
  4. ...
  5. ...
  6. ...
  7. ...
  8. ...
  9. ...
  10. ...
  11. ...
  12. ...
  13. ...
  14. ...
  15. ...
  16. ...
  17. ...
  18. ...
  19. ...
  20. ...
- NOTE: -

CLASS NOTATION

LOW, WH, FEV1, SH2, DP2-S, RM  
OFFSHORE SUPP/PORT VESSEL(S)bb1x  
\*V1 \*VM2 \*E

COMPLEMENT  
BOILERD PORT  
SPEED TRIALS  
MAIN PROPULSION ENGINE  
DECK CARGO (DECK LOADING = 11M<sup>3</sup>)  
CLEAN DECK AREA  
DRY BULK TANKS (2x1200 FT<sup>2</sup>)  
M/D BULK  
DRILL WATER  
FRESH WATER  
FUEL OIL  
DESIGN DRAWT  
DEPTH (M/D)  
BEAM (M/D)  
LENGTH (B.P.)  
LENGTH (M.T.)  
LENGTH (O.V.)

MINIMUM 60 TONS  
5 X 52.8 BHP  
780 BHP  
480 M<sup>3</sup>  
5152 M<sup>3</sup>  
230 M<sup>3</sup>  
850 M<sup>3</sup>  
420 M<sup>3</sup>  
280 M<sup>3</sup>  
6200 M<sup>3</sup>  
12800 M<sup>3</sup>  
62800 M<sup>3</sup>  
62818 M<sup>3</sup>  
10100 M

BRIDGE PLAN DIMENSIONS

船名	THETA	注册	1:100	比例		重量		吨位	0
船种	GENERAL PURPOSE	建造							
船东	GENERAL PURPOSE	船东							
船东	GENERAL PURPOSE	船东							
船东	GENERAL PURPOSE	船东							
船东	GENERAL PURPOSE	船东							
船东	GENERAL PURPOSE	船东							

MTC 2008  
for Special Purpose Ships (SpS 2008)  
IMO Res. MSC 266(84) Code of Safe Practice for Ships Carrying Bulk Cargoes  
MTC 2008  
for Special Purpose Ships (SpS 2008)  
IMO Res. MSC 266(84) Code of Safe Practice for Ships Carrying Bulk Cargoes  
MTC 2008  
for Special Purpose Ships (SpS 2008)  
IMO Res. MSC 266(84) Code of Safe Practice for Ships Carrying Bulk Cargoes

0691(V)-C1  
GENERAL PURPOSE SHIP ENGINEERING CO., LTD.  
GENERAL PURPOSE SHIP ENGINEERING CO., LTD.

021514E  
GENERAL PURPOSE SHIP ENGINEERING CO., LTD.

GENERAL PURPOSE SHIP ENGINEERING CO., LTD.

GENERAL PURPOSE SHIP ENGINEERING CO., LTD.