

TYWIN LANNISTER

Specification File



ANCHOR HANDLING TUG SUPPLY(AHTS)

TYWIN LANNISTER is a state-of-the-art anchor handling platform supply vessel that is utilized for supporting offshore activities.

- 42 Pax Accommodation
- 350 m² Deck Space
- 7.5T/m² Deck Strength
- 5150HP Anchor Handling Tug
- 63T Bollard Pull
- DPS-1 Class, Kongsberg

CONTACT

E-mail address

info@ejovigroup.com

tywinlannister@ejovigroup.com

TYWIN LANNISTER

VESSEL MAIN PARTICULARS

Vessel Name	TYWIN LANNISTER
Manager	Ejovi Dredging And Marine Services Limited
Owner	Ejovi Dredging And Marine Services Limited
Vessel design	ANCHOR HANDLING TUG SUPPLY
Type	AHTS/OSV DPS-1
Class definition	ABS+ A1, Offshore Support Vessel (SUPPLY, FFV1, AH, TOW), AMS, DPS-1, SPS
Vessel built	2006
Port of Registry	Nigeria
Flag State	Nigeria
IMO Number	9395537
Call Sign	5NXW8

PRINCIPAL DIMENSIONS

LOA	59.25m
Breadth Moulded	14.95m
Depth Moulded	6.10m
Maximum Draft	4.95m
LPP	52.20m
Deck Cargo	750T
Deck Strength	7.5T/m ²
Deadweight	1389T
Gross Tonnage	1678T
Net Tonnage	503T

ACCOMMODATION

Total number of bunker	42
------------------------	----

THRUSTERS

Bow Thrusters	CPP – 5T, Kawasaki 315KW
---------------	--------------------------

PROPULSION

Main Engine	CATERPILLAR
Propeller	2 X 3516 @2575BHP
Drive type Shaft	-
Fuel Type MGO/HFO	AGO

GENERATORS

Bow thrusters	CPP – 5 t, Kawasaki 315KW
Aux generators make	CATERPLLAR
Aux Generator Capacity	370kw
EM generators Make	Perkins
EM generators capacity	52kW

TYWIN LANNISTER

PRINCIPAL DIMENSION

Service Speed	10 Knots
Full Speed	13 knots
On DP (under average conditions)	-
Electricity Supply	220v

CARGO DECK

Deck space	350m ²
Deck Cargo	750T
Deck Strength	7.5T/m ²
Deadweight	1389T

TANK CAPACITIES

Fuel Oil	535m ³
Fresh Water	360m ³
Drill water/water ballast	400m ³
Foam	13m ³
Detergent	13m ³
Liquid Mud (Can be used for brine)	369.96m ³
Slop	36m ²

NAVIGATION EQUIPMENT

X-band Rader	1 X FURUNO RADAR
S band Rader	1 X FURUNO
Autopilot	1 X NAUTOPILOT NP60
GPS	1 X FURUNO GPS NAVIGATOR GP150
Echo sounder	1 X NAV ECHO SOUNDER FE-700
GMDSS Radios	FURUNO FS-2570
Gyro Compass	3 X DIGITALGYRO STD-22
AIS	1 X Furuno FA-150
Wind guage/Log	3/2

COMMUNICATION EQUIPMENT

MF/HF DSC	3 X FM-8900S
Soare Gypsy's	1
Navtex	1 X NX-700
EPIRB	1 X TRON/60S/60GPS
SART	2 X SART IC-6913A
Inmarsat C	2 X FELCOM 18
Portable VHF	3 X IC-M93D
Portable UHF	3 X HNN9010A
Weather fax	1 X FuFAX-408

DECK EQUIPMENT

Anchor Windglass	1 x Plimsoll, electric / hydraulic
Tugger winch	2 x Plimsoll, electric / hydraulic, 10 t @ 15 m/ min
Towing Winch	1 x Plimsoll double drum electric /
Capstan	2 x Plimsoll, electric / hydraulic, 5 t @ 15 m / min
Stern Roller	1.60 m dia. x 4.00 m length, SWL 200T
A-frame	i) SWL of sheave pad eye 30T ii) SWL of 'D' shackle 55T

MISCELLANEOUS

MOB	Yes
Crane	3T @9m
Number of Lifejackets	53
Number of Survival suits	46
Fire Fighting Class	Class 1

STANDBY/RESCUE

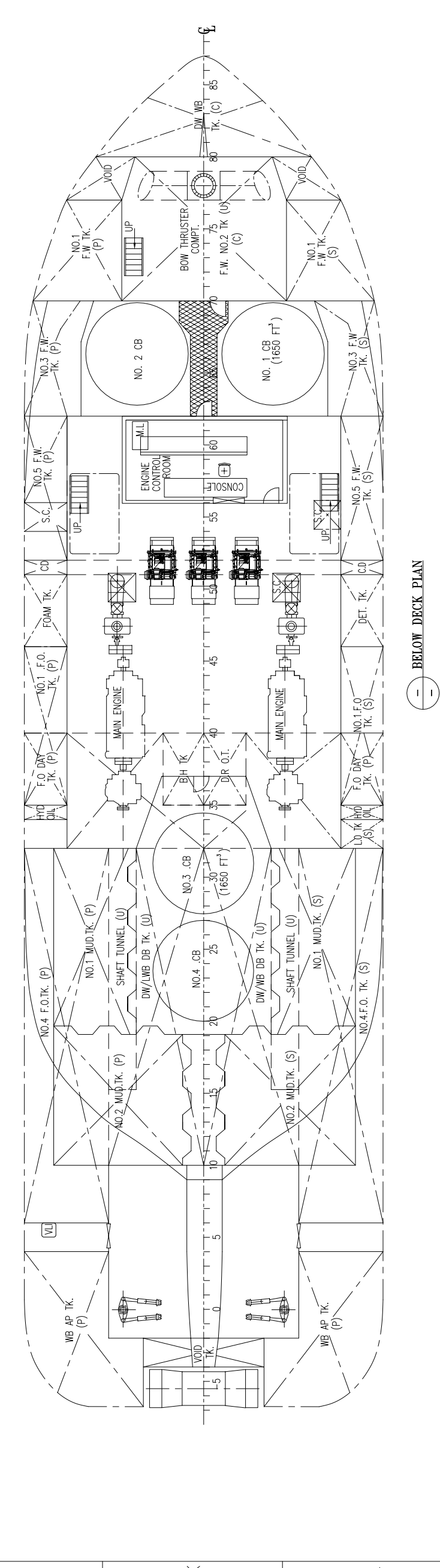
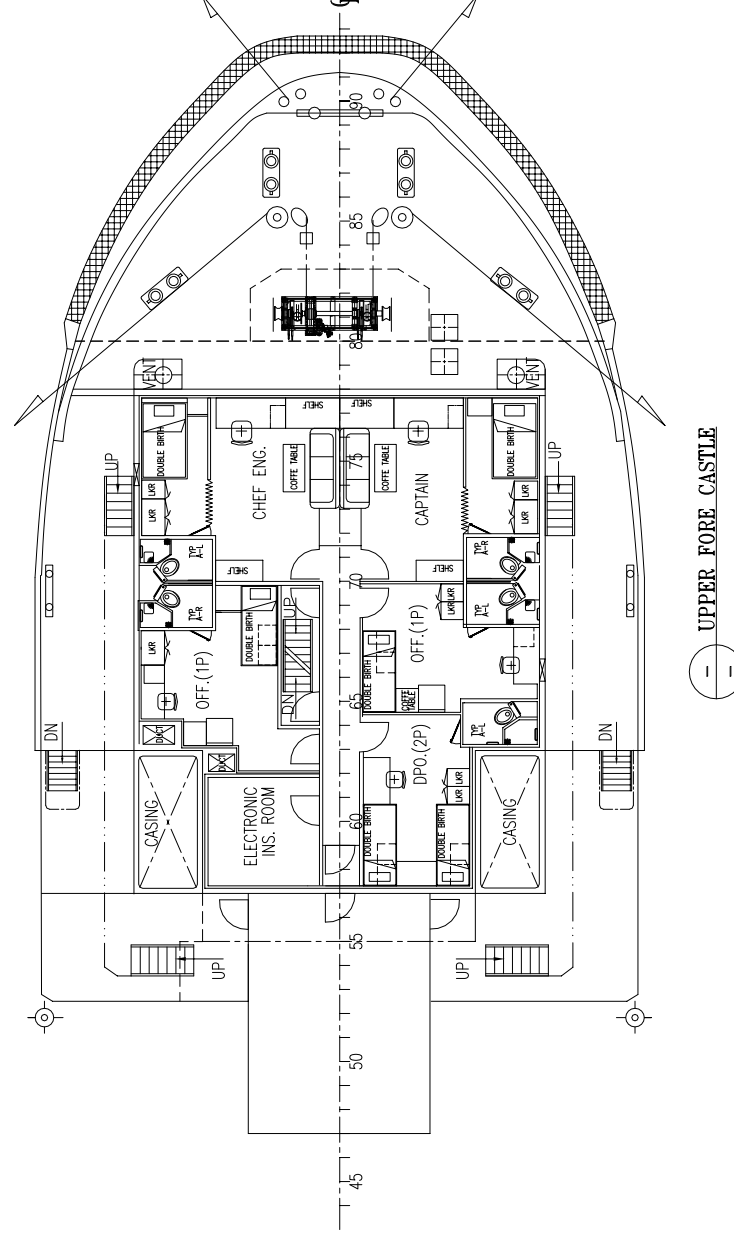
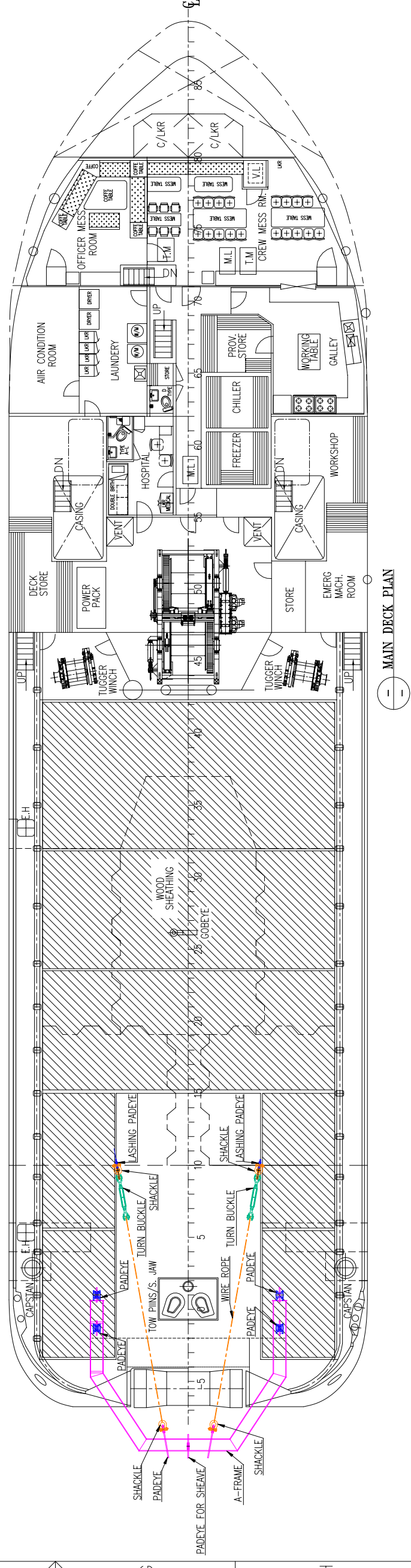
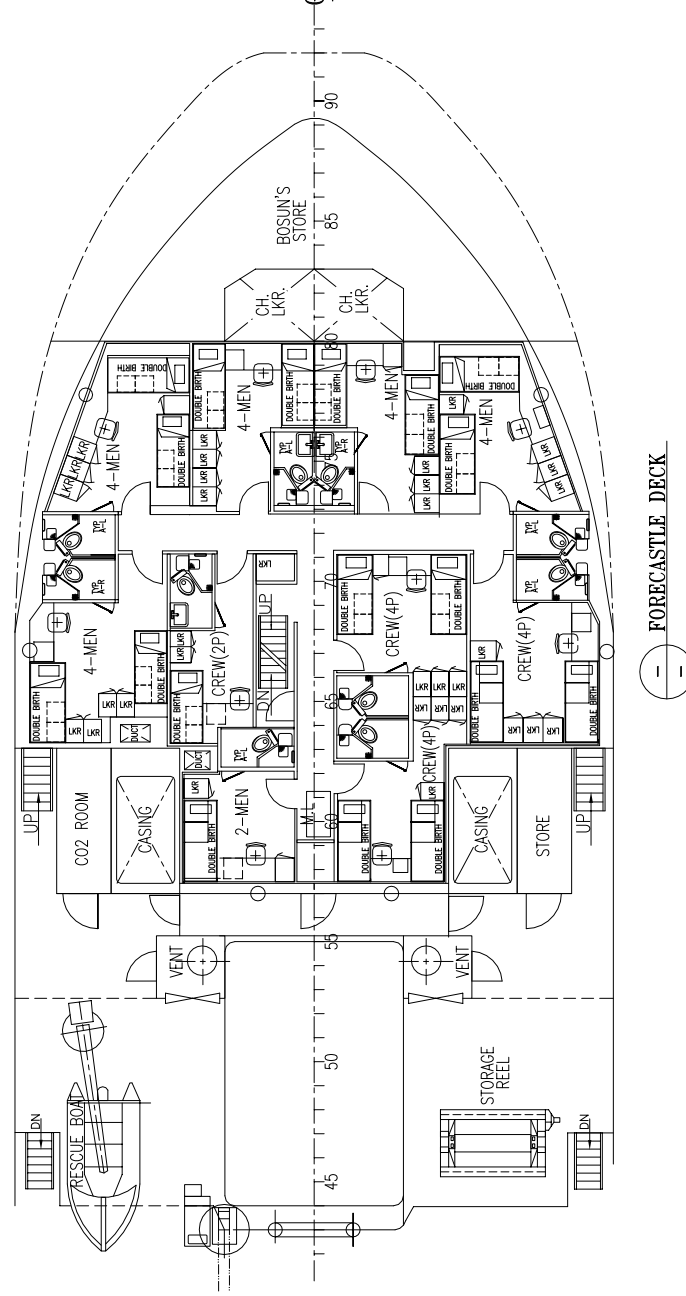
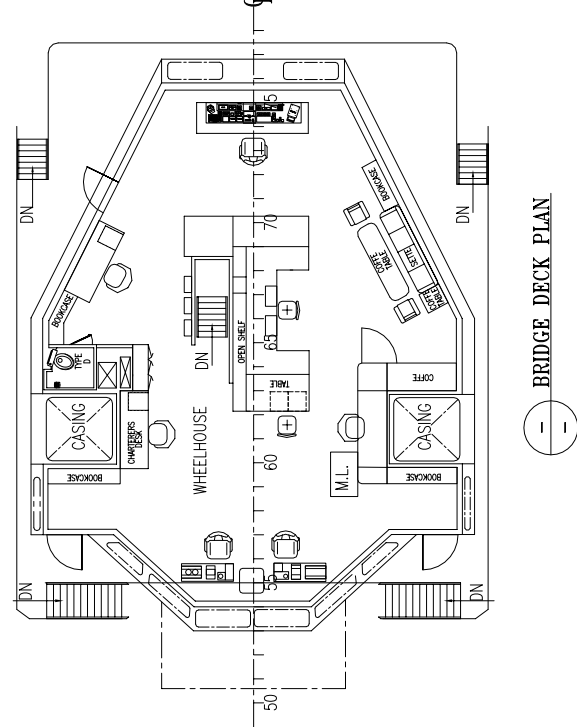
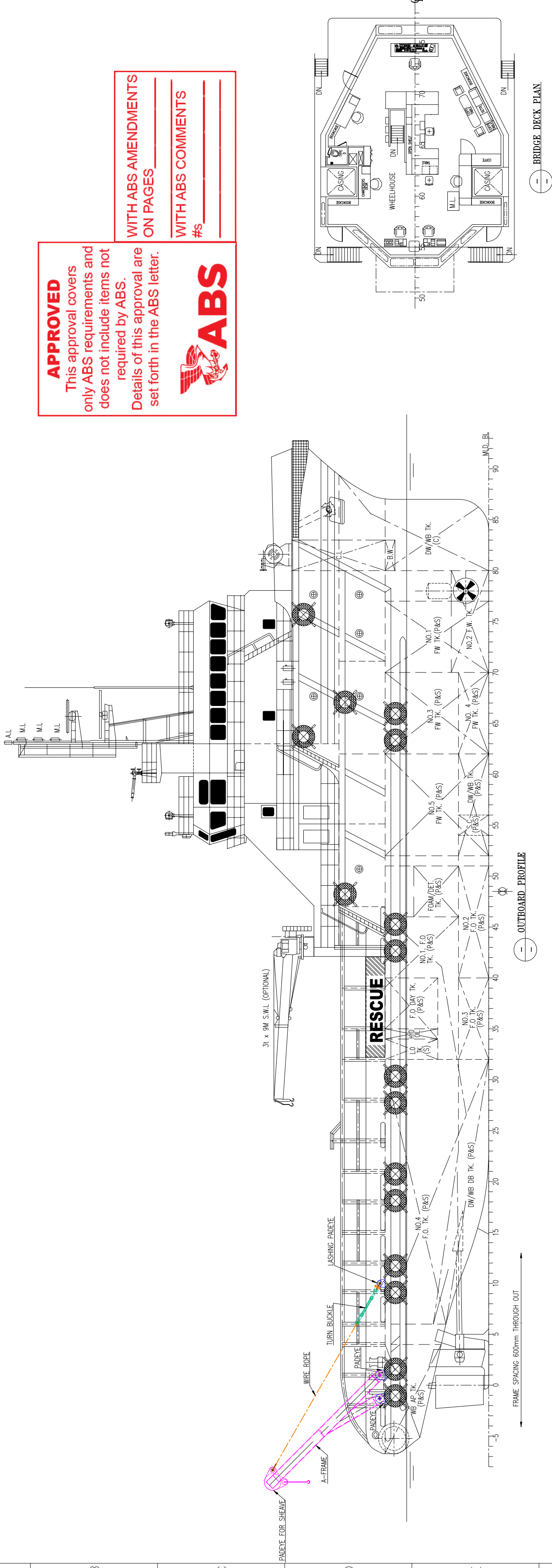
Searchlights	3
Line throwing device	4

GENERAL ARRANGEMENT PLAN - TYWIN LANNISTER

APPROVED
This approval covers only ABS requirements and does not include items not required by ABS. Details of this approval are set forth in the ABS letter.

WITH ABS AMENDMENTS ON PAGES _____

WITH ABS COMMENTS #S _____



GENERAL NOTE:
01: ALL DIMENSIONS ARE IN mm UNLESS SPECIFIED OTHERWISE.

SPECIAL NOTE:
01: THIS DRAWING IS REDRAWN FROM THE EXISTING SAFETY PLAN DRG NO. KCM/0331(A)-S1 TO SHOW THE A-FRAME INTEGRATION TO MAIN DECK.

REFERENCE DWG.
01: KCM/0331(A)-S1 SAFETY PLAN
02: DN113363_3001 STRUCTURAL DETAILS OF A-FRAME HULL INTEGRATION TO MAIN DECK

LEGEND

- EXISTING ARRANGEMENT
- PALETTE
- WIRE ROPE
- TURN BUCKLE

PRINCIPAL PARTICULARS

- LENGTH (O.A.) : 59.250 m
- LENGTH (W.L.) : 56.000 m
- LENGTH (B.P.) : 52.200 m
- BREADTH (MLD.) : 14.950 m
- DEPTH (MLD.) : 6.100 m
- DRAUGHT : 4.950 m
- GROSS TONNAGE : 1690.~
- COMPLEMENT : 420 MEN

TYWIN LANNISTER

UID	REV	DATE	DESCRIPTION	INITIAL	ISSUE	REVISIONS	REVISED BY	APPROVED
1563308	A	19.04.23						

ARYS MARINE & ENGG. SERVICES L.L.C
 P.O. BOX 4486, TOWER 400
 201 BOULEVARD, WASHINGTON, DC 20004
 Tel: +971(0)16 550 3300, Fax: +971(0)6 550 3100
 Website: www.arysmarine.com, Email: design@arysgrp.com

This drawing, design concept, and specifications are the property of ARYS MARINE & ENGG. SERVICES L.L.C. and are furnished as a confidential basis with an expressed understanding that they will not be copied in any manner, used for manufacture, sold, or otherwise disseminated without the written consent of ARYS MARINE & ENGG. SERVICES L.L.C. No liability shall be assumed by ARYS MARINE & ENGG. SERVICES L.L.C. for any errors or omissions in this drawing or for any consequences thereof.

GENERAL ARRANGEMENT PLAN

VESSEL NAME : TYWIN LANNISTER	DATE : 19.04.2023	DWG. No : DN13363/2001
DRAWN BY : MSH	JOB No : DN13363	SHEET : 01 OF 01
CHECKED BY : NN	SCALE : 1:150	REV : A
		SIZE : A1

